

# THE RIVERFRONT SCOOP

Volume 6 Issue 10

April 2026

## THE RIVER FRONT MASTER

92 SW 3rd Street, Suite 100  
Miami, Florida 33130

### ASSOCIATION OFFICERS

**President** ..... Shahab Karmely  
**Treasurer** ..... Joseph Mazloom  
**Secretary** ..... Andrea Baraybar  
**Director** ..... Christine Michaels

### PROPERTY MANAGEMENT

**Manager** ..... Rolando Cerit, CAM  
*manager@riverfrontmaster.com*  
**Director of Security** ..... Rafael Solis  
*chiefofsecurity@riverfrontmaster.com*  
**Maintenance Sup.** .. Benancio Collado  
*maintenance@riverfrontmaster.com*  
**Maintenance Tech** ..... Jorge Valdez

### IMPORTANT NUMBERS

**Main** ..... 786.453.3200  
**Security** ..... 786.459.3220 Ext 1

### OFFICE HOURS

**Monday - Friday** .... 9:00 am - 5:00 pm



Published monthly at no cost for the  
River Front Master by  
Coastal Group Publications, Inc.  
Contact CGP at (305) 981-3503 or  
[www.cgpnewsletters.com](http://www.cgpnewsletters.com)

to advertise in one of our newsletters or  
to get a free newsletter for your property.

## STRESS AWARENESS MONTH

*Are your symptoms stress-related?*

Stress isn't just about your emotions -- it affects your physical wellbeing, too, with physical symptoms and potential health consequences that can manifest before you're even ready to acknowledge how stressed-out you really are.



Our body's natural stress response -- the fight-or-flight instinct -- helps us manage stressful situations. But according to the Cleveland Clinic, our stress response can wreak havoc on our bodies if we're struggling with chronic long-term stress, such as high-pressure jobs, long-term illness or financial hardship.

Some of the symptoms of chronic stress include:

- Body aches and pains
- Problems with sleep, such as extreme fatigue or insomnia
- Chest pain or a racing pulse
- Elevated blood pressure
- Headaches, dizziness, shaking
- More frequent illness from a weakened immune system
- Hives
- Psychological symptoms like anxiety, depression, or panic attacks
- Substance abuse
- Excessive gambling, shopping, or other compulsive behaviors

Chronic stress can also contribute to long-term problems with your immune, digestive, cardiovascular, and reproductive systems.

There are things you can do to manage stress and protect your health. Daily physical activity, positive thinking, and taking the time to set achievable goals can all help you manage day-to-day stress. Your doctor or a therapist can also evaluate your symptoms and determine whether medication or talk therapy might be appropriate for you.

Remember that stress happens in life. While you can't always control the sources of your stress, you can control how you respond to it.

## Want a refund? First, try asking

There's a good chance that you spend more -- way more -- than you think you spend on subscriptions. In a subscription-heavy economy that willingly extracts monthly fees for premium content, razors, air fresheners, food deliveries, and dog toys, it's pretty easy to do. According to CNBC, around a third of consumers spend \$100 to \$199 more than they think they do on subscriptions, and more than 40 percent of consumers are still paying for forgotten subscriptions that they never use.

If you want to trim all the fat for good, you'll need to take the time to go through your emails and credit card statements to identify all the things you're paying for that you don't actually want. But there may be an upside: When you decide which companies to contact to cancel subscriptions, you can also ask for refunds.


For companies that deal in digital-only products and services, you might be pleasantly surprised at how easily you can claw back at least some of that wasted cash. Writing for the Guardian, Chloe Hamilton asked Amazon to refund several months of unused credit when she canceled a forgotten Audible subscription. To her surprise, the customer service representative immediately agreed, and the money reappeared in her bank account within a few days.


After finding out that she'd been subscribing to Babel for a full year without realizing it, another consumer requested a refund and to her amazement, promptly received it.

If you're going to the trouble of figuring out all your subscriptions and canceling them, you might as well take a few extra minutes to ask for your money back. The worst they can say, after all, is no.




**Coral Gables Dental Arts**

We Are  **Smile MAKERS!**



**Full Service Dentistry**


Scan for All Services 

**iDRIP** YOU DRIP, WE DRIP

**Join Us For Wellness Wednesdays**  
\* All Day

iDrip Immunity | iDrip Beauty | iDrip Metabolizer | Anti-Aging Injections | Medical Weight Loss | And More

**We have SPECIAL PRICES for our KEY BISCAYNE Patients.**  
Call us to schedule your appointment and ask for more information.

 **Coral Gables Dental Arts**  
305.661.5360 | 305.361.5493  
2645 SW 37th Ave. | Ste. 303 | Coral Gables, FL 33133



COMMISSIONER  
**VICKI L. LOPEZ**  
MIAMI-DADE COUNTY - DISTRICT 5



My Miami and Miami Beach offices are open and ready to welcome you. If you have a concern, need assistance, or want to connect with County services, my team and I are here to listen and support you.

**CONTACT US:**

- 305-375-5924 | [district5@miamidade.gov](mailto:district5@miamidade.gov)
- [www.miamidade.gov/district05](http://www.miamidade.gov/district05) | [@CommissionerVickiLLopez](https://twitter.com/CommissionerVickiLLopez)
- 2100 Coral Way, Suite 400, Miami, FL 33145 (Open M-F, 9 AM - 5 PM)
- 1700 Convention Center Drive, 1st Floor, Miami Beach, FL 33139 (Open M & W, 9 AM - 5 PM)

Mis oficinas en Miami y Miami Beach están abiertas y listas para recibirle. Si tiene alguna inquietud, necesita asistencia o desea conectarse con servicios del Condado, mi equipo y yo estamos aquí para escucharle y brindarle apoyo.

**CONTÁCTENOS:**

- 305-375-5924 | [district5@miamidade.gov](mailto:district5@miamidade.gov)
- [www.miamidade.gov/district05](http://www.miamidade.gov/district05) | [@CommissionerVickiLLopez](https://twitter.com/CommissionerVickiLLopez)
- 2100 Coral Way, Suite 400, Miami, FL 33145 (Abierto de lunes a viernes, de 9 AM a 5 PM)
- 1700 Convention Center Drive, 1st Floor, Miami Beach, FL 33139 (Abierto los lunes y miércoles, de 9 AM a 5 PM)





*April Showers*

**International Beaver Day, April 7**



Today, manmade (mitigation) wetlands cost from \$10,000 to 100,000 per acre to build, while each beaver family creates and maintains several acres of wetlands — for free.

*April is*

**NATIONAL CAR CARE MONTH**



*"A well maintained car is a safer, happier car!"*

**Have your car checked today!**



**invisalign**



**Abraham Jaskiel, DMD  
Steven Jaskiel, DDS**

**1865 Brickell Ave #A207 Miami, FL 33129**

**Holistic | Cosmetic | Pediatric | & Family Dentistry**

- ☞ Mercury Free office
- ☞ Gum Treatment
- ☞ Cosmetic
- ☞ Reconstructive
- ☞ **invisalign®**
- ☞ Inflammation & Toxin Removal
- ☞ Veneers – Implants
- ☞ Root-canals/extractions
- ☞ Laser Surgery & 3D Scanning

**Consult with us before getting a Root-canal or Extraction!!**

*We may prevent it! We preserve your natural teeth & reduce the need for root canals with our biomimetic techniques.*

**Insurance Accepted**

Including: Aetna, Metlife, Cigna, Guardian, United Health, GEHA, Humana & others  
*(Use it or lose it: Use your insurance before the end of the year!)*



**www.Drjaskiel.com**

**@BrickellDentist  
@Brickellholisticdentistry**

Ask About Our  
**NEW PATIENT SPECIAL**  
*Expires May 31, 2026*



**(305) 653-2231**

**Free Parking**

The patient and any other person responsible for payment has a right to refuse to pay, cancel payment, or be reimbursed for payment for any other service, examination, or treatment that is performed as a result of and within 72 hours of responding to the advertisement for the free, discounted fee, or reduced fee service, examination, or treatment.

**stellar**  
Public Adjusting Services  
*Professional Insurance Claim Representation*

**CALL US BEFORE YOUR INSURANCE COMPANY!!**

**(305) 396-9110**  
**STELLARADJUSTING.COM**



**RE-OPEN OLD & DENIED CLAIMS**

**WATER DAMAGE TO KITCHEN OR FLOORS?**

**LEAKS FROM UNITS ABOVE?**

**AIR CONDITIONER LEAK?**

**SHOWER PAN LEAK?**



**GOT PROPERTY DAMAGE?  
GET HELP NOW!**

THIS IS SOLICITATION FOR BUSINESS. IF YOU HAVE HAD A CLAIM FOR AN INSURED PROPERTY LOSS OR DAMAGE AND YOU ARE SATISFIED WITH THE PAYMENT BY YOUR INSURER, YOU MAY DISREGARD THIS ADVERTISEMENT.

Rami Boaz, License #PT17524

**What's My HOME WORTH?**

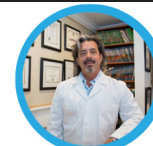


**ROSA JACQUELIN | BROKER ASSOCIATE**

786.239.1283



**TWO CONVENIENT LOCATIONS**



**EMERGENCY CARE 24/7**

**DR. EDY A. GUERRA**

**NEW PATIENT SPECIAL \$79**  
(D0210, D0150, D1110)

9456 HARDING AVENUE  
SURFSIDE, FL 33154  
305-866-2626

4011 WEST FLAGLER ST, SUITE 506  
MIAMI, FL 33134  
305-643-1444

[dredyaguerrads@gmail.com](mailto:dredyaguerrads@gmail.com)

**WWW.DENTISTSURFSIDE.COM**

## EARTH DAY 2026: The forest is fighting back

If you've ever doubted whether big environmental goals can actually be achieved, Pakistan has a story for you.

In 2014, the Pakistani province of Khyber Pakhtunkhwa launched an audacious goal: plant one billion trees. Skeptics were plentiful. But by 2018, a WWF audit confirmed the province had not only hit its target but surpassed it — planting 872 million seedlings with an average survival rate of nearly 89 percent, ahead of schedule, expanding the region's forests by 350,000 hectares. The International Union for Conservation of Nature called it "a true conservation success story," and the province became the first entity in the world to complete the Bonn Challenge, a global pledge to restore degraded land.



Energized by that success, Pakistan launched the Ten Billion Tree Tsunami in 2019 — a nationwide, government-backed effort to keep going. More than 500,000 green jobs were created in the process, many of them going to daily workers in rural communities who needed them most. Forest cover has measurably increased around every major planting site.

No project this large is without bumps. Independent researchers note that survival rates at some sites run lower than official estimates, and that species selection and long-term care matter as much as raw planting numbers. But even the skeptics agree: this is one of the most ambitious reforestation efforts ever attempted, and it is working.

# SNOW'S

---

## YOUR HOMETOWN JEWELER



### GOLD IS AT THE HIGHEST LEVEL IN HISTORY.

Snow's Jewelers is paying top dollar for old gold, diamonds, jewelry and watches.

Come in and get a free quote.

**NOW IS A GREAT TIME TO SELL!**

**CALL OR TEXT EDDIE SNOW:**

**Cell: 305.582.8117**

**Store: 305.443.7448**

*Consignment service is available. All transactions are strictly confidential.*

**NEW LOCATION! 2655 South LeJeune Road Suite 402, Coral Gables, FL 33134**

**CALL OR TEXT EDDIE SNOW FOR AN APPOINTMENT: 305.582.8117**