

Brickell Ten CONDOMINIUM



A Newsletter for the Residents of the Brickell Ten Condominium Association

Volume 3 Issue 1

February 2026

BRICKELL TEN
Condominium Association Inc.
1010 SW 2ND Ave
Miami, Florida 33130
brickelltenmanagement@gmail.com
<https://websites.mmilive.net/brickellten>

ASSOCIATION OFFICERS
President..... James Brewer
Vice President . Valeria Rodriguez
Secretary/Treas......Julia Stepanova

PROPERTY STAFF
Manager.....Madeleyvis Boris
brickelltenmanagement@gmail.com
Admin Assistant Linda Capote

IMPORTANT NUMBERS
Front Desk..... 786-245-6883
Security.... 786-245-6984 Ext 102
Main Office 786-235-9196

OFFICE HOURS
Mon. - Fri..... 9:00 am - 5:00 pm



Published monthly at no cost for
Brickell Ten Condo by
COASTAL GROUP PUBLICATIONS, INC.
Contact CGP at (305) 981-3503 or
www.cgpnewsletters.com to advertise
in one of our newsletters or to get a free
newsletter for your property.



Flatten Cardboard Boxes

Boxes MUST be broken down, folded, and brought down to the 1st-floor garage/ loading dock and placed in one of our trash containers. Do NOT place Boxes or any items in the hallway, stairwells, or garage area. Please avoid being charged for the disposal of these items. We appreciate everyone who recycles but unfortunately, we have limited recycling due to the high number of contamination charges due to residents dumping non-recycling items into the recycling bin. We are looking into other ways to implement recycling but have to limit this service for the time being.



Trash Chute

Please do not place anything besides household garbage in garbage bags into the trash chute. Do not place boxes of any size, including pizza and shoe boxes into the trash chute. Do not place comforters, mattress pads, clothes hangers, or any loose items. This clogs the chute and can also damage the metal inside the chute. Do not leave bottles by the trash chute. Place bottles in sealed garbage bags and throw down the trash chute. If possible, please bring bags with bottles to the trash chute container in the 1st-floor garage area.

Parking Area

No Items may be stored in the garage: This includes strollers, toys, beach chairs, bags, boxes, furniture, or anything that you are storing. The association disposes of items and will not be responsible for missing or broken items that are removed.

Pets Guidelines /

Access to Common Areas

According to Brickell Ten Condominium Rules and Regulations, your pets' access to the common areas is limited. We kindly ask that all current and prospective pet owners comply with the access restriction stated in the Rules and Regulations to ensure the safety and comfort of all Residents.



Please be informed that to use the Club Room, you must notify the management office Monday through Friday, between 9 AM and 5 PM. Additionally, you will need to complete the Club Room Package for us to reserve it on your behalf.

Be advised that certain fees apply when reserving the club room for a party or event. Under no circumstances will any party or gathering be allowed in the club room without prior notification to the office and payment of the required fees within the appropriate time frame.

RESERVE




COMMISSIONER
VICKI L. LOPEZ
MIAMI-DADE COUNTY - DISTRICT 5



My Miami and Miami Beach offices are open and ready to welcome you. If you have a concern, need assistance, or want to connect with County services, my team and I are here to listen and support you.

CONTACT US:

- 305-375-5924 | district5@miamidade.gov
- www.miamidade.gov/district05 | [@CommissionerVickiLLopez](https://twitter.com/CommissionerVickiLLopez)
- 2100 Coral Way, Suite 400, Miami, FL 33145 (Open M-F, 9 AM - 5 PM)
- 1700 Convention Center Drive, 1st Floor, Miami Beach, FL 33139 (Open M & W, 9 AM - 5 PM)


Mis oficinas en Miami y Miami Beach están abiertas y listas para recibirle. Si tiene alguna inquietud, necesita asistencia o desea conectarse con servicios del Condado, mi equipo y yo estamos aquí para escucharle y brindarle apoyo.




CONTÁCTENOS:

- 305-375-5924 | district5@miamidade.gov
- www.miamidade.gov/district05 | [@CommissionerVickiLLopez](https://twitter.com/CommissionerVickiLLopez)
- 2100 Coral Way, Suite 400, Miami, FL 33145 (Abierto de lunes a viernes, de 9 AM a 5 PM)
- 1700 Convention Center Drive, 1st Floor, Miami Beach, FL 33139 (Abierto los lunes y miércoles, de 9 AM a 5 PM)

Coral Gables Dental Arts


We Are  **Smile MAKERS!**



Full Service Dentistry

Join Us For Wellness Wednesdays
* All Day


iDRIP
YOU DRIP. WE DRIP

Scan for All Services 

iDrip Immunity | iDrip Beauty | iDrip Metabolizer | Anti-Aging Injections | Medical Weight Loss | And More

We have SPECIAL PRICES for our KEY BISCAYNE Patients.
Call us to schedule your appointment and ask for more information.

Coral Gables Dental Arts
305.661.5360 | 305.361.5493
2645 SW 37th Ave. | Ste. 303 | Coral Gables, FL 33133



Move In / Out Procedures

To facilitate your move-in or move-out process, we kindly ask that you email the management office with the exact date and time you would like to reserve the cargo elevator. Please ensure your reservation request is submitted at least three days in advance of your planned move or furniture deliveries. In addition, a Certificate of Insurance (COI) from your moving company is required. For your convenience, you can request a sample at brickelltenmanagement@gmail.com. Please note that we cannot confirm your reservation without this document.

The measurements for our cargo elevator are as follows:

Height: 87 | Width: 86

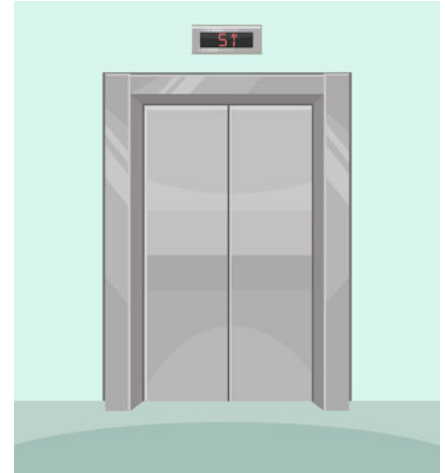
We strongly recommend disassembling any furniture you may have, as items that exceed these dimensions will not fit in the elevator.

Thank you for your cooperation and understanding. Should you have any questions or need further assistance, please feel free to contact the management office at 786-238-9198.

Elevator Reservations

We strongly suggest that you reserve the elevator in advance. The sooner the better as we only reserve (1) Move/delivery daily. We do not have the parking or the elevator capacity to have more than (1) truck/delivery at a time.

Workers Access:
When coordinating and scheduling any workers to your unit, please inform management in advance so they can be added to the daily schedule. Only companies/workers that have submitted their required documents will be added to the schedule. Lastly, **WE DO NOT HAVE PARKING FOR WORKERS ONSITE.** Only moves/deliveries that reserve an elevator and submit the required fees and documents will have parking.



After over half a century, Eddie & Judy are Retiring!
WE ARE CLOSING THE DOORS and EVERYTHING MUST GO!



Judy and Eddie

RETIREMENT - STORE CLOSING SALE!

Starts November 11th at Coral Gables Store only!

UP TO 70% OFF

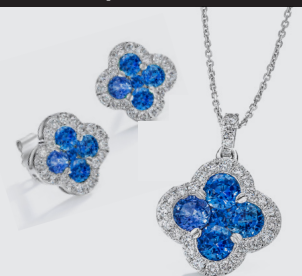
SNOW'S JEWELERS

*Not valid with other offers or previous purchases.

Plus, EXTRA **10% off** SELECT ITEMS!

SALE HELD AT
CORAL GABLES STORE ONLY
270 Miracle Mile • Coral Gables

Monday through Saturday
10 am to 6 pm



Scan this QR Code to receive sale updates and enter for a chance to win a \$1,000 shopping spree!



Sweaters from seaweed?

A new effort to find a planet-friendly clothing material took a deep dive into fibers and landed on kelp.

Yes, that's seaweed and it has some things going for it. It's abundant. It grows back easily. It doesn't contain pesticides or fertilizers, and isn't infected by microplastics. Plus, when kelp is turned into fiber, it helps create a flame-resistant, biodegradable, non-toxic material.

The developer, Keel Labs, calls the kelp fiber kelsun and it has already partnered with Stella McCartney and Outerknown to release the clothes made of the fiber.






1865 Brickell Ave #A207 Miami, FL 33129

Holistic | Cosmetic | Pediatric | & Family Dentistry

- ☞ Mercury Free office
- ☞ Gum Treatment
- ☞ Cosmetic
- ☞ Reconstructive
- ☞  Invisalign®
- ☞ Inflammation & Toxin Removal
- ☞ Veneers – Implants
- ☞ Root-canals/extractions
- ☞ Laser Surgery & 3D Scanning

Consult with us before getting a Root-canal or Extraction!!

We may prevent it! We preserve your natural teeth & reduce the need for root canals with our biomimetic techniques.

Insurance Accepted

Including: Aetna, Metlife, Cigna, Guardian, United Health, GEHA, Humana & others
(Use it or lose it: Use your insurance before the end of the year!)



www.Drjaskiel.com
 @Brickelldentist
 @Brickellholisticdentistry

Ask About Our
NEW PATIENT SPECIAL
Expires May 31, 2026






(305) 653-2231

Free Parking

The patient and any other person responsible for payment has a right to refuse to pay, cancel payment, or be reimbursed for payment for any other service, examination, or treatment that is performed as a result of and within 72 hours of responding to the advertisement for the free, discounted fee, or reduced fee service, examination, or treatment.



CALL US BEFORE YOUR INSURANCE COMPANY!!

(305) 396-9110

STELLARADJUSTING.COM



Public Adjusting Services
Professional Insurance Claim Representation






RE-OPEN OLD & DENIED CLAIMS

WATER DAMAGE TO KITCHEN OR FLOORS?

LEAKS FROM UNITS ABOVE?

AIR CONDITIONER LEAK?

SHOWER PAN LEAK?

MENTION THIS FLYER FOR FREE POLICY REVIEW

GOT PROPERTY DAMAGE?

GET HELP NOW!

THIS IS SOLICITATION FOR BUSINESS. IF YOU HAVE HAD A CLAIM FOR AN INSURED PROPERTY LOSS OR DAMAGE AND YOU ARE SATISFIED WITH THE PAYMENT BY YOUR INSURER, YOU MAY DISREGARD THIS ADVERTISEMENT.

TWO CONVENIENT LOCATIONS



EMERGENCY CARE 24/7


DR. EDY A. GUERRA
NEW PATIENT SPECIAL \$79
(D0210, D0150, D1110)

9456 HARDING AVENUE
SURFSIDE, FL 33154
305-866-2626


4011 WEST FLAGLER ST, SUITE 506
MIAMI, FL 33134
305-643-1444

dredyaguerrads@gmail.com
WWW.DENTISTSURFSIDE.COM

What's My HOME WORTH?



R.J.AREAHOMEVALUES.NET



Find out what your home might be worth in today's market.
Rosa Jacquetin | Realtor
(786) 239-1283

