

BP AI | P H A S E II

THE BUGLE

at Brickell Place Phase II

A Newsletter for the Residents of Brickell Place Phase II Association, Inc.

Volume 21 Issue 8

February 2026



BRICKELL PLACE PHASE II ASSOCIATION, INC.
1915 & 1925 Brickell Avenue
Miami, FL 33129



DIRECTORS AND OFFICERS

- Director & President...Eleonora Gabaldon
- Director & Vice Pres..... Julio Collier
- Director & Secretary..... Linda Hein
- Director & Treasurer..... Stephen Naar
- Director.....Andy Scalese
- Director.....Martha Bonilla
- Director.....Amanda Hand

ADMINISTRATION

- Community Assn. Mgr ..Eduardo Pereira, Jr
- Facilities & Ops Manager... Ricardo Inirio
- Office Manager.....Ariane Ventura
- Bookkeeper.....Kerena Rangel
- Housekeeping Supervisor..Jose Marquez

IMPORTANT NUMBERS

- Main 305-858-3891
- Fax 305-858-9319
- Convenience Store..... 305-285-0400

OFFICE HOURS

- Monday - Friday..... 8-4:30 pm

Welcome Our Two New Board Members

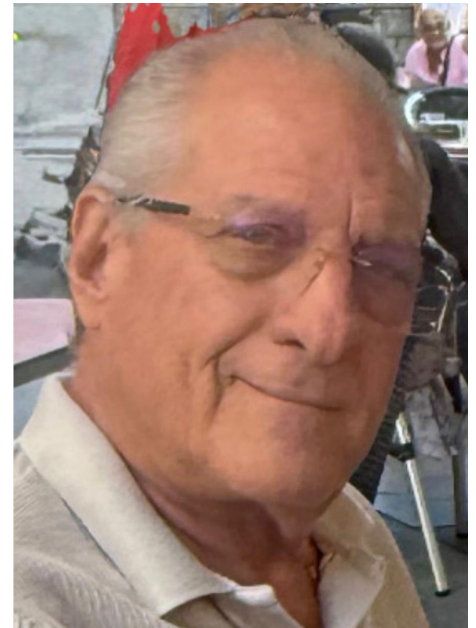
ANDY SCALESE

Extensive experience in security systems and processes.



STEPHEN NAAR

Entrepreneur with over 40-years' experience developing and leading corporations and the Private sector.



MOST IMPORTANT - UniFi

We are changing the system that allows access to the property effective 2/11/26. These are the instructions to be able to enter:

Instructions UniFi App

1-Invitation email
2-Get Started

3-Download the app
4-Open the app

5-Go back to the email
6-Get started again

7-Enable Face photo
8-Collect your face

Parking Space Violations

We will start to enforce the rule about allowing only registered vehicles and one folding cart in each parking spot.



February is American Heart Month

A reminder to focus on cardiovascular health and to encourage heart health habits



BRICKELL PLACE CONDOMINIUM Most Recent Sales

Apt #	Bed	Bath	Sq Ft	Sold Price
A-1901	2	2	1,661	\$790,000
B-1209	3	3	2,133	\$940,000
B-1713	2	2.5	1,467	\$640,000
B-2304	1	1.5	868	\$440,000
C-408	3	2.5	2,124	\$925,000



ALYESKA SEMSCH
JOSE CARLOS JIMENEZ
786-326-7655
info@semschrealty.com



SEMSCH REALTY

200 Crandon Blvd Suite 204, Key Biscayne, FL 33149
Brickell / Downtown / Key Biscayne
Coconut Grove / Coral Gables / Sunny Isles

Information is believed accurate, but not guaranteed. Information obtained from Miami-Dade public records.

Coral Gables Dental Arts

We Are **Smile MAKERS!**



Full Service
Dentistry

Scan for
All Services



Join Us For
Wellness Wednesdays
* All Day



iDrip Immunity | iDrip Beauty | iDrip Metabolizer | Anti-Aging
Injections | Medical Weight Loss | And More

We have **SPECIAL PRICES** for our **KEY BISCAYNE** Patients.
Call us to schedule your appointment and ask for more information.



Coral Gables Dental Arts
305.661.5360 | 305.361.5493
2645 SW 37th Ave. | Ste. 303 | Coral Gables, FL 33133

Stop Spending on Renovation. Start Investing in It.



SANANDRES CONSTRUCTION

DESIGN + PERMITS
+ CONSTRUCTION

Schedule a Free Consultation

in our Brickell office

Build with us and receive a preferred rate on premium design and permitting services.

- Engineered for higher resale value
- Condo-board compliant renovation specialists
- Turnkey service: design, permits & construction
- Fast and clean work inside condos

Luxury Is Easy. Intelligent Construction Is Everything.

CALL NOW!

305-285-4810

1925 Brickell Ave. Suite D203 Miami FL.



View Proven ROI projects

www.sanandrescg.com

✉ info@sanandrescg.com

📷 [@sanandresconstruction](https://www.instagram.com/sanandresconstruction)

Licensed & Insured | General Contractor

License: CGC-1513166

Architecture & Interior Design

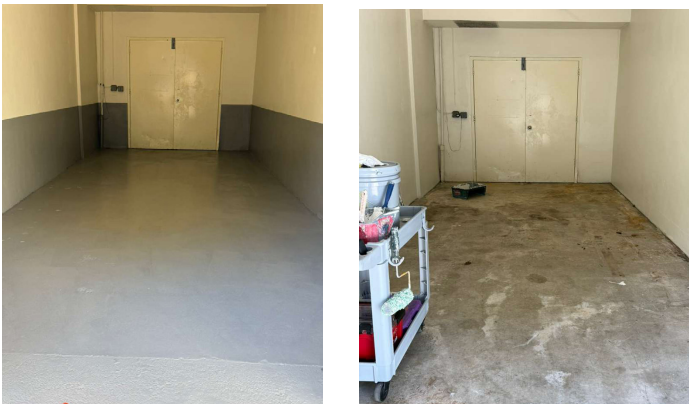
License: AA 26002016 - ID 6065

MOST RECENT ACCOMPLISHMENTS

Clearly designating and painting guest parking - yellow



Cleaning and painting a designated area for bicycles.



Purchasing new furniture for the playground and BBQ area





COMMISSIONER
VICKI L. LOPEZ
MIAMI-DADE COUNTY - DISTRICT 5



My Miami and Miami Beach offices are open and ready to welcome you. If you have a concern, need assistance, or want to connect with County services, my team and I are here to listen and support you.

CONTACT US:

☎ 305-375-5924 ✉ district5@miamidade.gov
 🌐 www.miamidade.gov/district05 📱 @CommissionerVickiLLopez
 📍 2100 Coral Way, Suite 400, Miami, FL 33145 (Open M-F, 9 AM - 5 PM)
 📍 1700 Convention Center Drive, 1st Floor, Miami Beach, FL 33139 (Open M & W, 9 AM - 5 PM)

Mis oficinas en Miami y Miami Beach están abiertas y listas para recibirle. Si tiene alguna inquietud, necesita asistencia o desea conectarse con servicios del Condado, mi equipo y yo estamos aquí para escucharle y brindarle apoyo.

CONTÁCTENOS:

☎ 305-375-5924 ✉ district5@miamidade.gov
 🌐 www.miamidade.gov/district05 📱 @CommissionerVickiLLopez
 📍 2100 Coral Way, Suite 400, Miami, FL 33145 (Abierto de lunes a viernes, de 9 AM a 5 PM)
 📍 1700 Convention Center Drive, 1st Floor, Miami Beach, FL 33139 (Abierto los lunes y miércoles, de 9 AM a 5 PM)







Abraham Jaskiel, DMD
Steven Jaskiel, DDS

1865 Brickell Ave #A207 Miami, FL 33129

Holistic | Cosmetic | Pediatric | & Family Dentistry

- 🦷 Mercury Free office
- 🦷 Gum Treatment
- 🦷 Cosmetic
- 🦷 Reconstructive
- 🦷  invisalign®
- 🦷 Inflammation & Toxin Removal
- 🦷 Veneers – Implants
- 🦷 Root-canals/extractions
- 🦷 Laser Surgery & 3D Scanning

Consult with us before getting a Root-canal or Extraction!!
We may prevent it! We preserve your natural teeth & reduce the need for root canals with our biomimetic techniques.

Insurance Accepted
 Including: Aetna, Metlife, Cigna, Guardian, United Health, GEHA, Humana & others
(Use it or lose it: Use your insurance before the end of the year!)

Ask About Our
NEW PATIENT SPECIAL
Expires May 31, 2026








www.Drjaskiel.com
 📱 @BrickellDentist
 @Brickellholisticdentistry


(305) 653-2231
Free Parking

The patient and any other person responsible for payment has a right to refuse to pay, cancel payment, or be reimbursed for payment for any other service, examination, or treatment that is performed as a result of and within 72 hours of responding to the advertisement for the free, discounted fee, or reduced fee service, examination, or treatment.




What's My
HOME WORTH?

RJ.AREAHOMEVALUES.NET



Find out what your home might be worth in today's market.
Rosa Jacquelin | Realtor
(786) 239-1283



stellar
Public Adjusting Services
Professional Insurance Claim Representation

CALL US BEFORE YOUR INSURANCE COMPANY!!

(305) 396-9110
STELLARADJUSTING.COM

CALL US TODAY FOR A FREE CLAIM INSPECTION

RE-OPEN OLD & DENIED CLAIMS
WATER DAMAGE TO KITCHEN OR FLOORS?
LEAKS FROM UNITS ABOVE?
AIR CONDITIONER LEAK?
SHOWER PAN LEAK?

GOT PROPERTY DAMAGE? GET HELP NOW!

MENTION THIS FLYER FOR FREE POLICY REVIEW

THIS IS SOLICITATION FOR BUSINESS. IF YOU HAVE HAD A CLAIM FOR AN INSURED PROPERTY LOSS OR DAMAGE AND YOU ARE SATISFIED WITH THE PAYMENT BY YOUR INSURER, YOU MAY DISREGARD THIS ADVERTISEMENT.

Rhinn Boazell License #PT19224

River District 14






BERKSHIRE HATHAWAY HOMESERVICES | EWM REALTY

LILIA V NAAR PA

LINA RIVERA PA
YOUR RESIDENT REALTORS

Developer offers a 12-month leaseback at 7% return after closing.

For access to Dropbox folder, go to <https://bit.ly/49y4XJO> and sign up.

Would you like to explore other pre-construction investment options? Let us help.

Scan QR for Full Market Report

MULTIPLE OPTIONS UNDER \$500K - To view current Brickell Place listings, go to <https://myre.io/0sTeGF54LRdu>

LILIA V NAAR PA
Realtor-Associate
305.582.3017 / lilinaar@gmail.com

LINA RIVERA PA
Realtor-Associate
305.967.9601 / rivera.li@ewm.com

CARLOS R OLIVARES LLC
Broker-Associate
305.894.6637 / olivares.c@ewm.com

Published monthly at no cost for the Brickell Place Phase II Condo by Coastal Group Publications, Inc. Contact CGP at (305) 981-3503 or www.cgpnewsletters.com to ADVERTISE in one of our newsletters or to get a FREE newsletter for your property.

Why Act Now?

Without accurate documentation, you risk:

- Contractor disputes or warranties
- Poor maintenance
- Risk of Delayed Insurance Claims (after storm events)
- Hidden issues

A well-documented condominium is a protected condominium.

SANANDRES CONSTRUCTION

END THE RISK OF LEGAL AND FINANCIAL SURPRISES. PROTECT YOUR RESERVES AND BUILDING WITH ORTHOMOSAIC OF PLANAR PROJECTION AND DIGITAL TWINS (OPTIONAL/POST-PROCESS)

Our Surveys Provide:

- Objective evidence for maintenance.
- Verifiable documentation for bids, audits and certifications.
- Accurate digital models for planning and inspections.
- Reliable records to protect your budget.

Verifiable Records.
Beyond Visual Inspection

Schedule a Free Consultation
in our Brickell office



✉ info@sanandrescg.com
📷 [@sanandresconstruction](https://www.instagram.com/sanandresconstruction)

www.sanandrescg.com

1925 Brickell Ave. Suite D203 Miami FL

What We Do

We use cutting-edge technology to create detailed digital maps and models of your property, allowing you to document, review, and support any maintenance, inspection, or certification easily and reliably.

CALL NOW!

305-285-4810

Questions?

Scan to See Projects
with Proven ROI.



After over half a century, Eddie & Judy are Retiring!

WE ARE CLOSING THE DOORS and EVERYTHING MUST GO!



Judy and Eddie

RETIREMENT - STORE CLOSING SALE!

Starts November 11th at Coral Gables Store only!



70% OFF

UP TO

Plus, EXTRA
10% off
SELECT ITEMS!

Scan this QR Code to receive sale updates and enter for a chance to win a \$1,000 shopping spree!

SNOW'S JEWELERS

*Not valid with other offers or previous purchases.

SALE HELD AT
CORAL GABLES STORE ONLY
270 Miracle Mile • Coral Gables

Monday through Saturday
10 am to 6 pm

