



Burleigh House

Monthly Newsletter

Volume 22 Issue 8

March 2025

BOARD MEMBERS

President..... Craig T. Trester
Vice Pres. ...Hans-Juergen R Klemm
Treasurer James Oleksa
Secretary.....Elaine Litwin
Director Andrea Romagna
Director Greg Kaliman
Director Alexis Collins
Director Kevin Mahon
Director Michelle A. Salemi
Director Erick Yehezekel

Manager Mercy Alvarez, LCAM

OFFICE HOURS

Monday - Friday..... 9:00 to 5:00
Lunch 1:00-2:00 p.m. Closed
Wednesday Closed to the Public
Saturday & Sunday Closed

IMPORTANT NUMBERS

Office.....(305) 866-7314
Fax(305) 866-8733
Security.....(305) 861-1869

BURLEIGH HOUSE

Condominium Assn. Inc.
7135 Collins Avenue
Miami Beach, FL 33141



Published monthly at no cost for Burleigh House Condo Assn. by Coastal Group Publications, Inc. Contact CGP at: 305- 981-3503 or info@cgpnewsletters.com to advertise in one of our newsletters or to get a free newsletter for your property.

DID YOU KNOW?: CAFFEINE TRIVIA

March is National Caffeine Awareness Month.

- Caffeine was on the International Olympic Committee list of prohibited substances until 2004. More than 12 micrograms of caffeine per milliliter of urine, about the amount in five cups of coffee, would have been cause for an athlete to be banned.
- The human body can absorb up to about 300 milligrams of caffeine at any given time. Any excess is secreted off.
- Twenty percent of the caffeine you've ingested is dissipated from your body every hour, so it takes about five hours for caffeine to fully leave your body.
- Dark roasted coffees have less caffeine than medium roasts. The longer coffee beans are roasted, the more caffeine burns off during the process.
- A strong cup of tea has about the same amount of caffeine as a cup of filtered coffee.
- Trimethylxanthine is the chemical term for caffeine.
- Seventy percent of all the sodas sold in the United States contain caffeine.
- In its pure state, caffeine is a crystalline white powder.
- Ten grams of caffeine is considered a lethal dose, the same as drinking 80 to 100 cups of coffee in rapid succession.
- Over 450,000,000 cups of coffee are consumed in the United States every day.
- Caffeine begins to affect your body's systems as soon as 15 minutes after it is consumed.



GUINNESS BEER CHEESE DIP

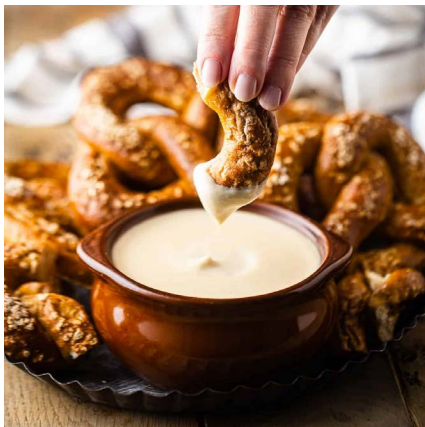
Ingredients

- 32 oz Velveeta, cut into 1/2-inch cubes
- 1 cup Irish stout beer (such as Guinness)
- 1/2 cup salsa
- 2 Tbs Worcestershire sauce
- 1 tspn chili powder
- 1/2 tspn onion powder
- 1/4 tspn cayenne pepper (Optional)


Directions

1. Heat cheese in slow cooker on high until melted, about 20 minutes.
2. Stir beer, salsa, Worcestershire sauce, chili powder, onion powder, and cayenne pepper into cheese until smooth and heated through, stirring frequently, about 10 minutes.

Serve with tortilla chips, raw veggies, crusty bread or baked pretzels for dipping.







PATRICKJAIMEZ PA

Mobile (786)-277-7355
patrickjaimez@gmail.com

COLDWELL BANKER
GLOBAL LUXURY

Hablo Español / Falo Português
Selling Real Estate for over 20 years!

THINKING OF SELLING OR BUYING?

I CAN HELP. I AM AT YOUR SERVICE.
Get Honest Experienced Help Selling or Buying your Home.

TRUST the advice of a professional.

When it comes to **Selling** or **Buying** a home, it is important to **trust** in a **Real Estate Agent** who cares about your neighborhood as much as you do. When you are ready to buy or sell **give me a call**, your local real estate expert.

Call me today for a FREE, no cost obligation, comprehensive market analysis of your property.



*CALL US BEFORE YOUR
INSURANCE COMPANY!!*

(305) 396-9110
STELLARADJUSTING.COM








RE-OPEN OLD & DENIED CLAIMS

WATER DAMAGE TO KITCHEN OR FLOORS?

LEAKS FROM UNITS ABOVE?

AIR CONDITIONER LEAK?

SHOWER PAN LEAK?

MENTION
THIS FLYER
FOR FREE
POLICY
REVIEW

GOT PROPERTY DAMAGE?

GET HELP NOW!

THIS IS SOLICITATION FOR BUSINESS. IF YOU HAVE HAD A CLAIM FOR AN INSURED PROPERTY LOSS OR DAMAGE AND YOU ARE SATISFIED WITH THE PAYMENT BY YOUR INSURER, YOU MAY DISREGARD THIS ADVERTISEMENT.

Room Board License #P17624

WANTED

PRINT JOBS *anything that puts ink on paper*

Condo/HOA Services | Residential or Commercial
 Voting/Election Packages • Annual Notices (w/ affidavits) • Letterhead
 Property Signage • Stickers/Decals • Window Lettering • Binding

Denizens | Businesses | Club Promoters | Restaurants | City
 Celebrations • Obit Books • Biz Cards • Promo Materials • Brochures
 Announcements • Posters-Banners • Vehicle Wraps

Contact Marc *(the newsletter guy)*
cgpimarc@earthlink.net | 786-223-9417

**TWO
CONVENIENT
LOCATIONS**



**EMERGENCY
CARE 24/7**

DR. EDY A. GUERRA
NEW PATIENT SPECIAL \$79
(D0210, D0150, D1110)

9456 HARDING AVENUE
SURFSIDE, FL 33154
305-866-2626

4011 WEST FLAGLER ST, SUITE 506
MIAMI, FL 33134
305-643-1444

dredyaguerradds@gmail.com
WWW.DENTISTSURFSIDE.COM

Condo Resident Perks



Luck of The Ear-ish HEARING HEALTH EVENT








Now Through March 31st only

**Pot o' Gold Savings on the all new Edge AI;
Starkey's most advanced Rx Hearing Aids yet.**

Melanie Plotkin, H.A.S., Hearing Aid Specialist

Javier Benitez, HAS, BC-HIS, Hearing Aid Specialist, Board Certified in Hearing Instrument Sciences

Introducing Edge AI.
Rivalled Only By Perfect Hearing.

-  **Next Generation Connectivity:** Volume adjustments from your smartphone.
-  **Speech Probability Predictor:** Identifies speech 30% more often, even in tough listening situations.
-  **Long-Lasting Rechargeable Battery:** Charge overnight and listen (and stream) for up to 51 hours.¹
-  **Waterproof²** up to 1 meter.
-  **Discreet** design



Exclusive Offer for Condo Residents!

\$1000 OFF

the purchase of a pair of
the all new Starkey Edge AI
Rx hearing devices.³



We Specialize in Second Opinions!

**Call Us Today
(888)-272-9589**

Google ★★★★★ Customer Reviews

"The staff is so friendly. They treat you like family. My issue was easily and quickly resolved." - **C. Pleach**

19046 NE 29th Avenue, **Aventura**
222 95th Street, **Surfside**
www.HearAgainAmerica.com

1. Edge AI RIC R only. Other styles will vary. 2. up to 1 m, not intended for swimming. Rechargeable styles only. 3. Cannot be used on prior purchases or combined with prior discounts.

I KID YOU NOT

March is National Kidney Month. And although we don't often give much thought to these hard-working organs of ours, it is a good time to learn more about our kidneys and how they relate to our general health. Your kidneys filter through approximately 200 quarts of blood a day, resulting in about two quarts of waste and excess fluids. They also produce hormones and vitamins that keep your body functioning properly. A person can have kidney disease for years and not know it. The early warning signs of kidney disease are:

- Burning during urination.
- Excessive need to urinate, especially at night.
- Blood in the urine.
- Puffiness or swelling of the hands or feet.
- Pain in the back or side below the ribs.
- High blood pressure.

If you have any of these symptoms, call your doctor. You should also get a simple urine and blood test each year to help detect early kidney disease. Ask your doctor for more information.



KITCHEN & BATHROOM REMODELING

SATISFACTION AND QUALITY GUARANTEED

NO JOB TOO SMALL

REMODELING & INSTALLATIONS

Kitchens | Bathrooms | Interiors
Cabinets | Vanities (New & Resurfaced)
Baseboards & Crown Molding | Mirrors
Quartz, Marble & Granite Countertops
Popcorn Ceiling Removal | Interior Doors & Frames
Impact Windows & Doors
Ceramic Tile & Marble Installed
Plumbing & Electrical Service

PAINTING

House, Condo, Apt. | Interiors & Exteriors
Roof Painting | Pressure Cleaning

MINOR REPAIRS

Exterior Wood | Facia & Soffit
Stucco | Drywall & Framing

Design & Management Services
Free Estimates
Service & Quality
Commercial & Residential



Specializing in Condo & Apartment interiors. We are committed to the fulfillment of your home improvement needs with an eye towards increasing the value of your real estate asset. Whether you are remodeling a kitchen, bathroom, complete residence or room addition, we are the **REMODELING EXPERTS.**
Family Owned for 40 years.

DIAMOND  **REMODELERS**

KITCHEN AND BATHROOM SPECIALISTS

Jeffrey Diamond

Lic# CC94BS00437

Licensed & Insured General Contractors

Anthony Lasorsa

Lic# CGC031497

WWW.DIAMONDREMODELERS.COM | 305-865-9005

Jeff@diamondremodelers.com

 @diamondremodelers

 Diamond Remodelers

Special Discounts will be applied for mentioning this ad

Published monthly at no cost for Burleigh House Condo Assn. by Coastal Group Publications, Inc. Contact CGP at:
T: 305-981-3503 or info@cgpnewsletters.com to advertise in one of our newsletters or to get a free newsletter for your property.