



5825 CORINTHIAN CONDOMINIUM

Volume 5 Issue 5

A Newsletter for the Residents of the The Corinthian Condominium Association, Inc.

January 2025

5825 CORINTHIAN Condominium Assoc., Inc.

5825 Collins Avenue
Miami Beach, Florida 33140
GM@5825corinthian.com
FSRsouth.FSRconnect.com/
5825CorinthianCondo

ASSOCIATION OFFICERS

President..... John Vest
Vice President Maria Chirino
Treasurer Mirna Serrano
Secretary..... Alicia Aloise
Director Derrick Attard
Director William Manso

PROPERTY STAFF

Managed By: . First Service Residential
Manager Alex Comesana
Gm@5825corinthian.com
Admin Asst Claudia Aparicio
Admin@5825corinthian.com

IMPORTANT NUMBERS

Main 305-865-3506
Fax 305-865-3508
Front Desk..... 305-866-6666
24-hour Cust. Care .. 866-378-1099

OFFICE HOURS

Monday-Friday..... 9:00 AM - 5 PM
HolidaysCLOSED

DISCLAIMER: The 5825 Corinthian Condominium board of directors and Newsletter editors assume no responsibility for the advertisements in this newsletter. The newsletter publication by Coastal Group Publications, is free for the association and is funded by the advertisements. 5825 Corinthian Condo in no way endorses or has any relationship with the vendors advertising in the newsletter. Furthermore, the editorial content of the newsletter expresses the view of the authors, which may occasionally differ from the view of a majority of the board of directors. The information provided in the newsletter may be subject to errors and omissions and should be verified by the readers before taking action.

MANAGEMENT REPORT

ADMINISTRATIVE ASSISTANT WEEK SUMMARY ITEMS:

- Processed payments for fobs, decals, and valet stamps
- Checked mail for invoices and sent to be processed
- Collected and processed maintenance payments
- Sent out email blast to inform building on repairs
- Posted on calendar upcoming deliveries
- Filed away processed fee receipts
- Contacted maintenance for water leaks



MAINTENANCE ITEMS

All Florida Colors completed the removal of the mirror, repair/add drywall, skim coated the wall and applied primer. The wall paint to follow.



Before

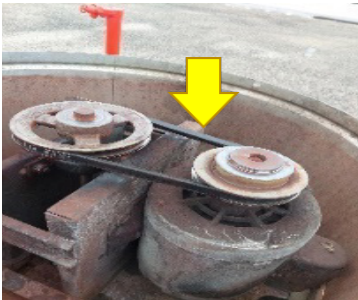


after

Maintenance replaced several roof exhaust faulty fan belts.



G Bathroom lines before



after

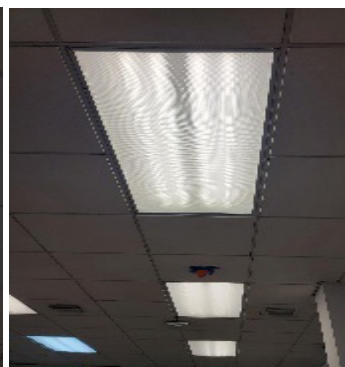


G kitchen line

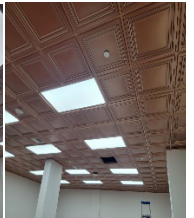
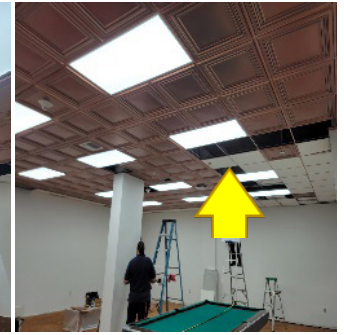
Maintenance completed the replacement of the billiard room lights with integrated LED drop-in ceiling panel light and the PVC ceiling tiles 2'x2' plastic sheet in bronze.



Old ceiling light



new lights



New ceiling panels completed

Continued on page 3



GET INVOLVED



Join our ReadingPals community, and give the gift of literacy!

Uplift Literacy is recruiting dedicated volunteers who want to make a meaningful difference in your area!



ReadingPals commit just one hour per week to help children build early literacy skills while fostering meaningful relationships.



LEARN MORE or SIGN UP by visiting our website at www.upliftliteracy.org/readingpals

Maintenance Items (cont. from page 2)

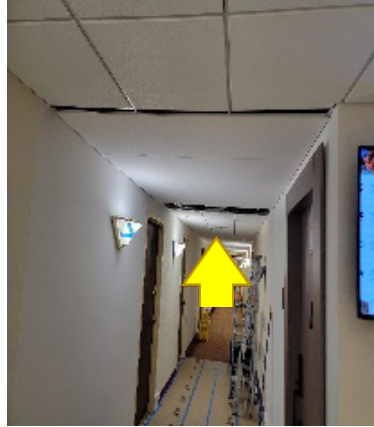
A new 85" TV was installed in the Corinthian Room to replace the projector



Interior Renovation Project: A display of the new front door in the 2nd floor hallway in front of the laundry room. Also, there is a display of the new ceiling tiles and lighting for residents to view in the 2nd floor hallway.



Display - 2nd floor hallway in front of the laundry



new ceiling tiles.



new ceiling lights

"A man who stops advertising to save money is like a man who stops a clock to save time." – Henry Ford

CGP publishes monthly newsletters for over 50 condos; each written & delivered to each resident by the board & management.

Advertise to over 30,000 condo residents.

COASTAL GROUP
PUBLICATIONS, INC.

305-981-3503 www.cgpnewsletters.com

**TWO
CONVENIENT
LOCATIONS**



**EMERGENCY
CARE 24/7**

DR. EDY A. GUERRA

New Patient Special \$79
(D0210, D0150, D110)

**9456 HARDING AVE.
SURFSIDE, FL 33154
(305) 866-2626**

**4011 W. FLAGLER ST.
CORAL GABLES, FL 33134
(305) 643-1444**

dredyaguerradds@gmail.com

www.dentistsurfside.com

Did You Know?

How many days in a millennium? The calendar system that was in use during a particular millennium determines the actual number of days that elapse during that time span.

- The First Millennium (1 - 1000 AD) consisted of 365,250 days.
- The Second Millennium (1001 - 2000 AD) consisted of 365,237 days.
- Our current Millennium (2001 - 3000 AD) will consist of 365,242 days.



Public Adjusting Services
Professional Insurance Claim Representation

CALL US BEFORE YOUR INSURANCE COMPANY!!

(305) 396-9110
STELLARADJUSTING.COM








RE-OPEN OLD & DENIED CLAIMS

WATER DAMAGE TO KITCHEN OR FLOORS?

LEAKS FROM UNITS ABOVE?

AIR CONDITIONER LEAK?

SHOWER PAN LEAK?



GOT PROPERTY DAMAGE?

GET HELP NOW!

THIS IS SOLICITATION FOR BUSINESS. IF YOU HAVE HAD A CLAIM FOR AN INSURED PROPERTY LOSS OR DAMAGE AND YOU ARE SATISFIED WITH THE PAYMENT BY YOUR INSURER, YOU MAY DISREGARD THIS ADVERTISEMENT.

DIAMOND REMODELERS

Full Service Contractors



@DIAMONDREMODELERS

We are committed to the fulfillment of your home improvement needs with an eye towards increasing the value of your real estate asset. Whether you are remodeling a kitchen, bathroom, complete residence or room addition, we are the *Remodeling Experts*, **family owned for 40 years**.

Kitchen & Bathroom Remodeling
Satisfaction and Quality Guaranteed

specializing in condo & apartment interiors

Jeff Diamond & Anthony Lasorsa
305-865-9005
www.diamondremodelers.com
jeff@diamondremodelers.com

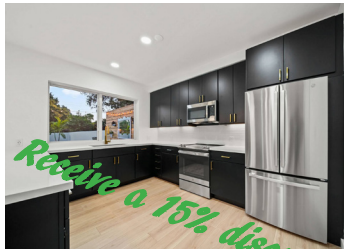
REMODELING • INSTALLATIONS

- Kitchen / Bathroom
- New & Resurfaced Cabinets
- Cabinets / Vanities
- Custom Baseboards / Crown Moldings
- Granite / Marble / Quartz Counter Tops
- All Types of Tiles & Marble Installed

"Your Experienced Handyman"

PAINTING & SERVICES UNLIMITED

- Painting, Condo, House, Apt. Roof Painting
- Popsom Ceiling Removal
- Smooth Ceilings
- Framing, Drywall & Finishes
- Full Service Contractors
- Plumbing & Electrical Service
- Doors / Windows
- Mirror Installation



- Design & Management Services
- No Job Too Small
- Free Estimates
- Service & Quality at Reasonable Prices
- Commercial & Residential
- Habla Español

15% Off
any remodeling job!

10% OFF Any Service
Valid With Coupon. Not To Be Combined With Other Offers. Exp 2/28/2025



Condo Resident **Perks**

Now through January 31st only!

Your New Year's resolution:
I will hear better this year.
Achieve it with Edge AI from Starkey.

Melanie Plotkin, HAS, Hearing Aid Specialist
Javier Benitez, HAS, BC-HIS, Hearing Aid Specialist,
Board Certified in Hearing Instrument Sciences



GET **\$1000 OFF**
the purchase of a pair of the all new
Starkey Edge AI hearing devices¹.

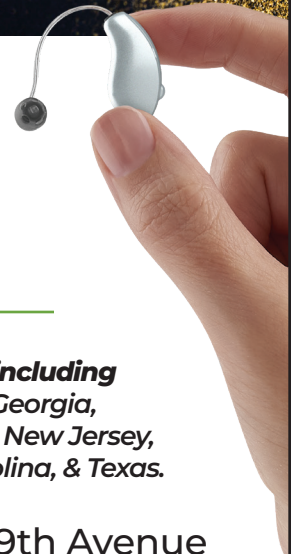


Introducing Edge AI Starkey's
EDGE AI's cutting-edge technology
mimics the brain's auditory cortex to
help fix that broken process — classifying
complex soundscapes, enhancing speech,
and reducing noise in real-time with
advanced and powerful AI at the edge.

- **Waterproof Up to 1 meter**
- **Identifies speech 30% more often than our previous models.**
- **Next Generation Connectivity**
- **Smart Adaptation distinguishes between noise and speech.**

Google ★★★★★ **Hear what our patients are saying:**

"Tremendous customer service. They actually deliver great service, not just talk about it. The product they sell is good, but they make it exceptional with their service and expertise. And they are really nice people which is the icing on the cake." - R. Cartwright



Over 36 locations including
Arkansas, Florida, Georgia,
Indiana, Maryland, New Jersey,
North & South Carolina, & Texas.

WE SPECIALIZE IN SECOND OPINIONS!

CALL US TODAY!
(888) 272-9589

Aventura: 19046 NE 29th Avenue
Surfside: 222 95th Street
www.HearAgainAmerica.com

1. Cannot be used on prior purchases or combined with prior discounts. \$1,000 off HAA's SRP.

The FSR associates got together for the monthly safety meeting for the month of January, which was held in both English and Spanish.

Safety Topic | January 2025 

Slips, Trips, & Falls



Global Service Standard #10 - Safety and Security are everyone's responsibility. We follow safety policies and procedures, and we know our individual and collective roles in emergency situations.

Did you know? Slips, Trips, & Falls are one type of workplace accident that can be 100% prevented. By paying close attention to our surroundings, we are more likely to avoid the hazards that can cause us to stumble, figuratively and literally. Yet, it is one of the top three workplace injuries reported here at FirstService Residential.

Statistics show that the majority (67%) of falls happen on the same level resulting from slips and trips. The remaining 30% are falls from a height (the amount of the height varies).

Listed below are some of the most common reasons for slips, trips, & falls injuries.

Slips 	Trips 	Falls 
<ul style="list-style-type: none"> Wet or oily floors Unseen or occasional spills Weather hazards in open areas Loose, unanchored rugs or mats Flooring or other walking surfaces that do not have same degree of traction in all areas 	<ul style="list-style-type: none"> Obstructed views Poor lighting Uneven steps or walking surfaces Wrinkled carpeting Uncovered cables Clutter in the way Bottom drawers not being closed 	<ul style="list-style-type: none"> Not using the proper safety equipment on an elevated surface Climbing on unstable surfaces Not performing proper maintenance on ladders Wet or oily floors

Life, simplified.SM

Tema de Seguridad | enero de 2025 

Resbalones, tropiezos y caídas



Estándar de servicio global n° 10 - La seguridad y la protección son responsabilidad de todos. Seguimos las políticas y los procedimientos de seguridad y conocemos nuestros roles individuales y colectivos en situaciones de emergencia.

¿Sabía usted? Que los resbalones, tropiezos y caídas son un tipo de accidente en el lugar de trabajo que se puede prevenir por completo. Al prestar atención a nuestros alrededores, es más probable que podamos evitar los riesgos que pueden hacer que nos tropecemos, en forma figurativa y literal. Sin embargo, aquí en FirstService Residential esta es una de las tres principales lesiones en el lugar de trabajo.

Las estadísticas muestran que la mayoría (67%) de las caídas ocurren en el mismo nivel como resultado de resbalones y tropiezos. El restante 30% corresponde a caídas desde una altura (las alturas varían).

A continuación, se indican algunas de las causas más comunes de lesiones por resbalones, tropiezos y caídas.

Resbalones 	Tropiezos 	Caídas 
<ul style="list-style-type: none"> Suelos mojados o aceitosos Derrames no visibles u ocasionales Peligros por mal tiempo en áreas abiertas Alfombras o tapetes sueltos o sin fijación Suelo o superficies de tránsito que no tienen el mismo grado de tracción en todas las áreas 	<ul style="list-style-type: none"> Vistas obstruidas Iluminación deficiente Escalones o superficies para caminar irregulares Alfombras con arrugas Cables sin cobertura Obstáculos en el camino Cajones inferiores sin cerrar 	<ul style="list-style-type: none"> No utilizar el equipo de seguridad adecuado en una superficie elevada Trepas por superficies inestables No realizar el mantenimiento adecuado de las escaleras Suelos húmedos o aceitosos

Life, simplified.SM

WANTED

PRINT JOBS

anything that puts ink on paper

**Condo/HOA Managers/BODs
Mgmt Companies-Residential or Commercial**

Voting/Elections Packages • Annual Notices (w/ affidavits)
Letterhead • Complete Property Signage
Parking/Scooter/Bicycle Stickers and Decals
Window Lettering-Wraps • Newsletters • Binding

**Denizens | Businesses | Club Promoters
Schools | Restaurants | County | City**

Events • Reunions • Graduations • Obit Books • Weddings
Promotional-Branding Materials • Announcements
Biz Cards • Pamphlets • Brochures
Yearbooks • Posters-Banners • Vehicle Wraps

CONTACT MARC *(the newsletter guy)*
cgpimarc@earthlink.net
786-223-9417

for a no obligation quote on your next print job
*** NO JOB TOO BIG OR TOO SMALL ***
Tight time lines, rush jobs ...
we'll do our best to help meet your commitments.

7441 Wayne Ave
PARKVIEW POINT #15B


Call Now!
Rosa Jacquelin
(786) 239-1283



Love Where You Live!



VIDEO

www.SignatureHomesOfMiami.com