

OCTAGON *Tribune*



Volume 5 Issue 5

A Monthly Newsletter for the Residents of the Octagon Towers Condominium

June 2019

OCTAGON TOWERS CONDOMINIUM

1881 Washington Avenue
Miami Beach, Florida 33139

ASSOCIATION OFFICERS

Scott Weikel
Steven Velozo
Eibi Aizenstat
Raul Jidy
Adriana Moya
Greg Freeman
Joseph Pearson
Jill Rose Robinson
Alba Gonzalez

PROPERTY STAFF

Manager Jose Barbosa, LCAM
Manager@octagoncondo.com

Maintenance Sup. ... Jaime Orozco

Maintenance Pedro Alvarez

IMPORTANT NUMBERS

Main 305-673-6580

Fax 305-673-9169

Valet 305-673-4563

After Hours Emergency

..... 954-458-5517

OFFICE HOURS

Monday-Friday 8 am - 4 pm



High Rise Board Notice to Residents

June 1, 2019

RE: OCTAGON TOWERS CONDO. ASSN.,
INC. – Hurricane Procedures



Dear Resident:

As hurricane season is upon us once again and will last through November 30th, the coast of South Florida can be threatened at anytime during this season. The information contained in this report will help you prepare for a hurricane emergency and understand how the Association will also prepare your building. This report has also been written to help you take precautions to protect your family and property. Please take a moment to read this very important information.

Association Specialty Group (“ASG”) and your Association would like to ensure that all unit owners receive as much information as possible to aid in the preparation for an upcoming storm. During these months special precautions need to be taken by everyone in the community.

The following links will aid you in those preparations:

<http://www.nhc.noaa.gov> • <http://www.fema.gov> • <http://www.floridadisaster.org/>

(S. Florida television station websites also include hurricane preparedness links. Your supermarket also has guides to hurricane safety.)

ASG has a responsibility and a protocol to safeguard the residents, the employees and the mechanical equipment during a storm based on our knowledge and experience.

WHAT YOU CAN DO TO SAFEGUARD YOUR BELONGINGS & THOSE OF THE ASSOCIATION

1. Implement as many precautions as practical in advance, such as removing and securing all outside items that might become missiles during the storm, closing hurricane shutters and placing towels on window sills and on the bottom of your front doors.
2. Please note that all Hurricane Shutters **must be removed no later than 10 days after a hurricane** unless there is an imminent hurricane threat behind it. **Check your association’s Rules and Regulations, as the time allotted for removal may differ.**

Continued on page 2

Hurricane (cont from page 1)

- Please make arrangements in advance as to where you will stay during an evacuation. Remember that pets are not allowed in all evacuation centers. Contact your assigned evacuation center in advance so you can make plans for you and your pets.
- Leaving town for any length of time during hurricane season? BEFORE YOU GO: Remove plants, loose objects and assign a nearby relative or friend to close the shutters.** In the event of a storm, do not rely on the association’s staff to make preparations for you. Their time will be dedicated to securing the community’s mechanical operations and common areas.
- Plan to Evacuate:** When an evacuation order is issued, **EVERYONE** must evacuate the community and go to your community’s assigned shelter (if available). An evacuation area is no place to be during a hurricane. Employees and residents are **ALL** expected to evacuate. There will be no emergency services during a storm, and authorities will not be available to help you.
- At the time a call for evacuation has been issued, the Association employees will conclude the procedures to prepare the community’s common areas for the storm and leave. Once an evacuation order is given, you should be packed and prepared to leave.
- Your city officials advise the elderly or handicapped residents not to wait for the official evacuation order... Please leave early.

PROTECTING YOUR EQUIPMENT AND ELECTRICAL WHILE SAFEGUARDING THE RESIDENTS & STAFF

- The protocol for safeguarding the mechanical equipment** is set into motion at the time when a hurricane warning is issued to your geographical area and starts with the least necessary equipment leaving the most indispensable equipment for last.
- At the time of a Hurricane Watch** – a hurricane may threaten the area within 36 hours – we begin securing the building. The specific details for your property can be found in the “On Site Hurricane Preparation Manual” which is site specific to your building and which has been approved by the Board of Directors.
- When a Hurricane Warning** – hurricane force winds are expected to make landfall within 24 hours – has been issued and after all preparations have been completed, non-essential personnel, under the direction of the manager, will leave at the end of their shifts. Typically, a mandatory evacuation order is also announced at this time in all coastal areas. This mandatory evacuation cre-

Continued on page 3



DAVILA CONSTRUCTION GROUP LLC.
State General Contractor CGC1521462
CALL FOR FREE ESTIMATES
305.974.2628
Contact@Davila-Construction.com



24 Years in Construction
Bathrooms | Kitchen | Floors
General Remodeling
ASK FOR OUR CONDO UPGRADE PACKAGES!

BLINDS & SHADES

FREE SHOP AT HOME SERVICE | **WE BEAT ANY ESTIMATE** | **FREE MEASURING & INSTALLATION**
BLINDS, SHADES, SHUTTERS

FAST SERVICE, LOWEST PRICES GUARANTEED!

20% OFF Motorized Shades | **MOTORIZED SPECIALIST REPAIRS** | **WE ALSO DO REPAIRS**
exp. 8/31/19 | VERTICALS REPAIRED & CLEANED | VERTICAL TRACKS REPAIRED
must present coupon | SHADES REPAIRED & CLEANED

305-469-8162 WE SHOW UP! 25 Years in Biz




Fernando A. Rizzo, MBA
REALTOR®

(352) 256-2203
Fernando@RizzoTheRealtor.com

“Work with a Professional!”

Hurricane (cont from page 2)

ates a critical time frame in which the staff must execute the final mechanical protocols before the storm actually reaches your building.

4. The essential personnel – manager, engineer, and office staff – will remain at your property maintaining building services and assisting residents as they follow the mandatory evacuation order. When sustained winds reach 45 mph and the hurricane continues to be an imminent threat, the essential personnel, in agreement with the Board of directors, will begin to shut down the property's four main mechanical systems- **elevators, HVAC equipment, domestic water pumps and pool equipment.** This helps to assure that your systems will not be damaged as a result of operating during the storm and will be operational after conditions return to normal and power has been restored. After the shut down has been completed, our essential personnel will follow the mandatory evacuation order issued by the appropriate governmental agency and leave the property.

5. ASG STAFF:

- a. ASG will not require or encourage any employee to remain on the property in violation of an evacuation order.
- b. Any employee remaining at the property, at the request of the Board, after this shut down, is required to accept the terms of and sign a waiver form provided by ASG. Board signature is also required on the waiver.
- c. Essential employees will return to your property as soon as physically possible *after sustained winds have dropped below 45 mph and an all clear has been issued.*
- d. All other employees are required to report back to your property at daybreak and when sustained winds have dropped below 35 mph.
- e. Employees will have the option of using any available sick time to be compensated for any time missed due to a mandatory evacuation.

6. MECHANICAL BUILDING COMPONENTS (that affect the entire building and should be protected are the elevators, HVAC equipment, domestic water pumps, and the pool equipment.)

ELEVATORS

The elevators should be parked on the upper floors of the building with the doors closed. (The highest possible floor is recommended by the elevator companies).

Pull disconnect switch in the machine room in the off position before power fails.

Close up all vents and openings at the top of the hoist way to prevent water from getting into the elevator shaft and secure door to elevator room so that it does not fly open.

WHY: In the event of a coastal surge, flooding will damage the elevators and fill the pits. In addition to flooding, water damage caused by wind driven rain most likely will enter the shaft and ruin the electrical equipment on top of the cars. This kind of damage will render a building immobile for a long period of time while the elevator company repairs the equipment.

If the elevators are running and the power is interrupted, residents may be stuck inside the cabs for long periods of time. Evidence has shown that many people suffer anxiety or heart attacks in these situations. Emergency crews may not be able to respond to 911 calls under hurricane conditions.

HVAC EQUIPMENT

Turn off power to the pump motors by turning off all breakers on panel to the circulating pumps.

WHY: The pump motors may burn up due to lack of water circulation. Water circulation stops due to low water pressure from the city, which occurs frequently during hurricanes.

Loss of electrical power will cause pumping stations to lose pressure. Electrical surges during the storm may also damage the pumps.

Most HVAC systems in recently built buildings use PVC pipes. These pipes are located on the roof and can break in the event a wind driven object hits or falls on the pipes. Once the pipes break and water is lost out of the system, the motors can burn out.



Retired nurse looking for part time work caring for elderly patients. Has own car for help with transportation to and from doctor's appointments, shopping and errands.

786-486-9022

Excellent References
Resume Available on Request

Hurricane (cont from page 3)

Condenser water pump motors are expensive and must be ordered by the HVAC contractor once they fail. Depending on availability one to several weeks of down time can be expected for repairs. The Board may wish to purchase extra motors to be used for quicker replacement should they decide to leave the equipment running.

DOMESTIC WATER PUMPS

Staff will turn off power to the domestic water pumps. (Buildings that are equipped with staged water pumps may consider leaving one pump on manual override if the pressure is sufficient for the upper floors.)

WHY: Loss of electrical power will cause pumping stations to lose pressure. If not, enough water reaches the pumps, they may burn out.

POOL EQUIPMENT

Staff will turn off power to the pool equipment and lower the water level in the pool.

WHY: Loss of electrical power will cause pumps to lose pressure. If not, enough water reaches the pumps, they may burn out. The chemical feeders will also shut down, causing chemical imbalances in the pool. Debris will be driven in the pool, clogging filters.

There are other sections of the building that must be secured but do not create as much dispute as the A/C, water, and the elevators, such as lobby doors which should be left in unlocked position and other items in a check list that is available to all managers to follow as a guideline so that all aspects of the building are inspected prior to the impact of the hurricane. NOTE: We DO NOT ever shut off electricity to the building.

AFTER THE HURRICANE

All essential personnel will return to your property as soon as physically possible after sustained winds have dropped below 45 MPH and an all clear has been issued.

If you have any questions, please contact the management office at: (305) 673-6580 / Emergency Phone: (954) 458-5557.

Tune-Up Tips



Your bags are packed, your maps are unfolded, and the kids all have their snacks. You and your family are ready for your road trip, but is your car? As the weather gets warmer, there are some things you should do to ensure that every trip, short or long, is a safe one.

Do a check of all of your exterior lights and windshield wipers. Look over your tires to make sure that the tread is not worn down. Don't forget to check your spare also. This is a great time to get out your jack, make sure it is in working order, and review how to use it.

Under the hood, check the belts, battery, and all fluid levels. It is a good idea to get a fresh oil and filter change before and after a road trip. Fill up the washer fluid reservoirs and wash all the windows.

Inside your vehicle, do a safety check of all of your seat belts. Check any car seats that are in your car, making sure that they have been installed according to the manufacturer's instructions. Keep a safety kit in your vehicle. This should include first aid supplies, a wrench, screwdriver, flashlight, safety flares, extra water, and some rags.



stellar
Public Adjusting Services
Professional Insurance Claim Representation

**GOT PROPERTY DAMAGE?
GET HELP NOW!**

RE-OPEN OLD & DENIED CLAIMS

FREE CLAIM INSPECTION

IS YOUR ROOF LEAKING?

ARE YOU HAVING PLUMBING BACKUPS?

DO YOU HAVE WATER DAMAGE?

DOES YOUR DRAIN LINE NEED TO BE REPLACED?

**RESIDENTIAL • COMMERCIAL
COMMUNITY ASSOCIATIONS**

			
Roof Leaks	Water Damage	Vandalism Damage	Loss of Income
			
Fire Damage	Flood Damage	Hurricane Damage	Mold Damage

**MIAMI-DADE (305) 396-9110
BROWARD (954) 376-6991
PALM BEACH (561) 404-3069**

STELLARADJUSTING.COM

This is solicitation for business. If you have had a claim for an insured property loss or damage and you are satisfied with the payment by your insurer, you may disregard this advertisement.

License #P175224

Summer Milkshake Recipes

Red, White & Blue Milk Shakes

- 1 quart strawberry ice cream
 - 1 cup milk
 - 1/2 cup strawberry preserves
 - 1/4 cup frozen whipped topping, thawed
 - 1/4 cup fresh blueberries, washed
- Combine the ice cream, milk, and strawberry preserves in a blender. Blend until well combined. Pour into glasses, top with whipped topping and blueberries.

Chocolate Peanut Butter Milkshake

- 1 cup cold milk
 - 1/3 cup chocolate syrup
 - 2 tablespoons creamy peanut butter
 - 1-1/2 cups vanilla ice cream
- Place ice cream, milk, chocolate syrup and peanut butter in blender. Blend until well combined.

Mocha Mudslide Milkshake

- 1 cup m
 - 2/3 cup sliced ripe bananas
 - 2 tbsp sugar
 - 1 tsp instant coffee
 - 1/4 cup vanilla low-fat yogurt
- Place the milk, banana, sugar and coffee granules in a blender and blend until well combined. Freeze in a blender container for 1 hour or until slightly frozen. Loosen frozen mixture from the sides of blender container, add yogurt and blend until smooth. Garnish with banana slices.

Banana-Mango Milkshake

- 1 whole mango
- 1 whole banana
- 2 scoops vanilla ice cream
- 1 1/4 cup milk
- 1 tablespoon sugar

Peel and pit mango. Peel banana. Place all ingredients into blender and blend until well combined.

Cafe Latte Milkshake

- 1-1/2 cups cold coffee
 - 2 scoops vanilla ice cream
 - 2 tablespoons chocolate syrup.
- Place all ingredients into blender and blend until well combined.



RED WHITE & BLUE U.S.A!

After Party

REFRESHMENTS, DJ MUSIC
AND FUN

FRIDAY JULY 19TH, 2019
12 TO 2 PM

WEAR RED, WHITE AND BLUE

1700 79TH STREET CAUSEWAY,
SUITE 120. NORTH BAY VILLAGE,
FL 33141

RSVP TO SONIA 305-902-2383

ELITE
HEALTH
MEDICAL CENTERS

Miami-Dade Commissioner

Eileen Higgins

District 5
★ ★ ★

Our office is here to serve you. For assistance,
please feel free to reach out:

www.miamidade.gov/district05 | district5@miamidade.gov

/CommishEileen 305-375-5924 @CommishEileen

DIAMOND REMODELERS

Full Service Contractors

We are committed to the fulfillment of your home improvement needs with an eye towards increasing the value of your real estate asset. Whether you are remodeling a kitchen, bathroom, complete residence or room addition; we are the *Miami Beach Experts*, **family owned for 30 years.**

*specializing
in condo &
apartment interiors*

Jeff Diamond & Anthony Lasorsa
305-865-9005
www.diamondremodelers.com
jeff@diamondremodelers.com



Painting & Services Unlimited Lic. CC94BS00437 • Lasora Enterprises, Inc CGC031497
Licensed & Insured General Contractor

Kitchen & Bathroom Remodeling

Satisfaction and Quality Guaranteed

REMODELING • INSTALLATIONS

- Kitchen / Bathroom
- New & Resurfaced Cabinets
- Cabinets / Vanities
- Custom Baseboards / Crown Moldings
- Granite / Marble / Mica Counter Tops
- All Types of Tiles & Marble Installed

*"Your Experienced
Handyman"*

PAINTING & SERVICES UNLIMITED

- Painting, Condo, House, Apt. Roof Painting
 - Full Service Contractors
 - Popcorn Ceiling Removal
 - Plumbing & Electrical Service
 - Smooth Ceilings
 - Doors / Windows
 - Framing, Drywall & Finishes
 - Mirror Installation
- EST. 1980

- Design & Management Services
- No Job Too Small
- Free Estimates
- Service & Quality at Reasonable Prices
- Commercial & Residential
- Habla Español

**15%
Off**
any
remodeling
job!

**10%
OFF**
Any
Service

Valid With Coupon.
Not To Be Combined
With Other Offers.
Exp 7/31/2019

One Dollar Emergency Dental Visit Including Necessary X-Rays

NEW PATIENTS ONLY.



Meet Your
Neighborhood Dentist
Dr. Edy A. Guerra

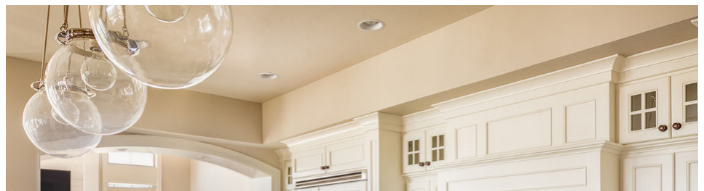
Over 20 years in Surfside / Bay Harbour / Bal Harbour

Two Locations to Better Serve You

9456 Harding Ave. 4011 W. Flagler St.
Surfside, FL 33154 Coral Gables, FL 33134

(305) 866-2626

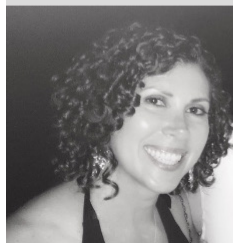
<http://www.dentistsurfside.com/>



ROSA JACQUELIN
Elite Miami Homes

WWW.ELITEMIAMIHOMES.COM

WHAT COULD YOUR HOME SELL FOR?
TEXT "VALUE" TO 786.239.1283



*"Love Where
You Live!"*

