



## 2020 Assessments - - Beginning January 1, 2020

UNIT	\$/month	UNIT	\$/month	UNIT	\$/month	UNIT	\$/month	UNIT	\$/month		
A102	3.97	B101	3.97	A802	547.97	B804	472.52	A1405	472.52	B1407	547.97
A103	3.97	B102	3.97	A803	547.97	B805	472.52	A1406	547.97	B1408	853.72
A104	3.97	B103	3.97	A804	472.52	B806	547.97	A1407	547.97	B1409	1,064.17
A105	3.97	B104	3.97	A805	472.52	B807	547.97	A1408	853.72	B1410	567.82
A106	1.59	B105	3.97	A806	547.97	B808	853.72	A1409	1,064.17	B1411	734.60
A107	2.38	B106	3.97	A807	547.97	B809	1,064.17	A1410	567.82	B1412	734.60
A201	3.97	B107	3.97	A808	853.72	B810	567.82	A1411	734.60	B1413	774.30
A202	3.97	B108	3.97	A809	1,064.17	B811	734.60	A1412	734.60	B1414	853.72
A203	3.97	B109	3.97	A810	567.82	B812	734.60	A1413	774.30	B1501	853.72
A204	3.97	B147	3.97	A811	734.60	B813	774.30	A1414	853.72	B1502	547.97
A205	3.97	B201	107.21	A812	734.60	B814	853.72	A1501	853.72	B1503	547.97
A206	3.97	B202	1,044.32	A813	774.30	B901	853.72	A1502	547.97	B1504	472.52
A207	3.97	B203	107.21	A814	853.72	B902	547.97	A1503	547.97	B1505	472.52
A208	3.97	B204	142.95	A901	853.72	B903	547.97	A1504	472.52	B1506	547.97
A209	3.97	B401	853.72	A902	547.97	B904	472.52	A1505	472.52	B1507	547.97
A223	3.97	B402	547.97	A903	547.97	B905	472.52	A1506	547.97	B1508	853.72
A401	853.72	B403	547.97	A904	472.52	B906	547.97	A1507	547.97	B1509	1,064.17
A402	547.97	B404	472.52	A905	472.52	B907	547.97	A1508	853.72	B1510	567.82
A403	547.97	B405	472.52	A906	547.97	B908	853.72	A1509	1,064.17	B1511	734.60
A404	472.52	B406	547.97	A907	547.97	B909	1,064.17	A1510	567.82	B1512	734.60
A405	472.52	B407	547.97	A908	853.72	B910	567.82	A1511	734.60	B1513	774.30
A406	547.97	B408	853.72	A909	1,064.17	B911	734.60	A1512	734.60	B1514	853.72
A407	547.97	B409	1,064.17	A910	567.82	B912	734.60	A1513	774.30	B1601	853.72
A408	853.72	B410	567.82	A911	734.60	B913	774.30	A1514	853.72	B1602	547.97
A409	1,064.17	B411	734.60	A912	734.60	B914	853.72	A1601	853.72	B1603	547.97
A410	567.82	B412	734.60	A913	774.30	B1001	853.72	A1602	547.97	B1604	472.52
A411	734.60	B413	774.30	A914	853.72	B1002	547.97	A1603	547.97	B1605	472.52
A412	734.60	B414	853.72	A1001	853.72	B1003	547.97	A1604	472.52	B1606	547.97
A413	774.30	B501	853.72	A1002	547.97	B1004	472.52	A1605	472.52	B1607	547.97
A414	853.72	B502	547.97	A1003	547.97	B1005	472.52	A1606	547.97	B1608	853.72
A501	853.72	B503	547.97	A1004	472.52	B1006	547.97	A1607	547.97	B1609	1,064.17
A502	547.97	B504	472.52	A1005	472.52	B1007	547.97	A1608	853.72	B1610	567.82
A503	547.97	B505	472.52	A1006	547.97	B1008	853.72	A1609	1,064.17	B1611	734.60
A504	472.52	B506	547.97	A1007	547.97	B1009	1,064.17	A1610	567.82	B1612	734.60
A505	472.52	B507	547.97	A1008	853.72	B1010	567.82	A1611	734.60	B1613	774.30
A506	547.97	B508	853.72	A1009	1,064.17	B1011	734.60	A1612	734.60	B1614	853.72
A507	547.97	B509	1,064.17	A1010	567.82	B1012	734.60	A1613	774.30	B1701	853.72
A508	853.72	B510	567.82	A1011	734.60	B1013	774.30	A1614	853.72	B1702	547.97
A509	1,064.17	B511	734.60	A1012	734.60	B1014	853.72	A1701	853.72	B1703	547.97
A510	567.82	B512	734.60	A1013	774.30	B1101	853.72	A1702	547.97	B1704	472.52
A511	734.60	B513	774.30	A1014	853.72	B1102	547.97	A1703	547.97	B1705	472.52
A512	734.60	B514	853.72	A1101	853.72	B1103	547.97	A1704	472.52	B1706	547.97
A513	774.30	B601	853.72	A1102	547.97	B1104	472.52	A1705	472.52	B1707	547.97
A514	853.72	B602	547.97	A1103	547.97	B1105	472.52	A1706	547.97	B1708	853.72
A601	853.72	B603	547.97	A1104	472.52	B1106	547.97	A1707	547.97	B1709	1,064.17
A602	547.97	B604	472.52	A1105	472.52	B1107	547.97	A1708	853.72	B1710	567.82
A603	547.97	B605	472.52	A1106	547.97	B1108	853.72	A1709	1,064.17	B1711	734.60
A604	472.52	B606	547.97	A1107	547.97	B1109	1,064.17	A1710	567.82	B1712	734.60
A605	472.52	B607	547.97	A1108	853.72	B1110	567.82	A1711	734.60	B1713	774.30
A606	547.97	B608	853.72	A1109	1,064.17	B1111	734.60	A1712	734.60	B1714	853.72
A607	547.97	B609	1,064.17	A1110	567.82	B1112	734.60	A1713	774.30	B1801	853.72
A608	853.72	B610	567.82	A1111	734.60	B1113	774.30	A1714	853.72	B1802	547.97
A609	1,064.17	B611	734.60	A1112	734.60	B1114	853.72	A1801	853.72	B803	547.97
A610	567.82	B612	734.60	A1113	774.30	B1201	853.72	A1802	547.97	B1804	472.52
A611	734.60	B613	774.30	A1114	853.72	B1202	547.97	A1803	547.97	B1805	472.52
A612	734.60	B614	853.72	A1201	853.72	B1203	547.97	A1804	472.52	B1806	547.97
A613	774.30	B701	853.72	A1202	547.97	B1204	472.52	A1805	472.52	B1807	547.97
A614	853.72	B702	547.97	A1203	547.97	B1205	472.52	A1806	547.97	B1808	853.72
A701	853.72	B703	547.97	A1204	472.52	B1206	547.97	A1807	547.97	B809	1,064.17
A702	547.97	B704	472.52	A1205	472.52	B1207	547.97	A1808	853.72	B1810	567.82
A703	547.97	B705	472.52	A1206	547.97	B1208	853.72	A1809	1,064.17	B1811	734.60
A704	472.52	B706	547.97	A1207	547.97	B1209	1,064.17	A1810	567.82	B1812	734.60
A705	472.52	B707	547.97	A1208	853.72	B1210	567.82	A1811	734.60	B1813	774.30
A706	547.97	B708	853.72	A1209	1,064.17	B1211	734.60	A1812	734.60	B1814	853.72
A707	547.97	B709	1,064.17	A1210	567.82	B1212	734.60	A1813	774.30	B1901	853.72
A708	853.72	B710	567.82	A1211	734.60	B1213	774.30	A1814	853.72	B1902	547.97
A709	1,064.17	B711	734.60	A1212	734.60	B1214	853.72	A1901	853.72	B1903	547.97
A710	567.82	B712	734.60	A1213	774.30	B1401	853.72	A1902	547.97	B1904	472.52
A711	734.60	B713	774.30	A1214	853.72	B1402	547.97	A1903	547.97	B1905	472.52
A712	734.60	B714	853.72	A1401	853.72	B1403	547.97	A1904	472.52	B1906	547.97
A713	774.30	B801	853.72	A1402	547.97	B1404	472.52	A1905	472.52	B1907	547.97
A714	853.72	B802	547.97	A1403	547.97	B1405	472.52				
A801	853.72	B803	547.97	A1404	472.52	B1406	547.97				

Continued on page 3

2020 Assessments (cont. from page 2)

UNIT	\$/month	UNIT	\$/month
A1906	547.97	B1908	853.72
A1907	547.97	B1909	1,064.17
A1908	853.72	B1910	567.82
A1909	1,064.17	B1911	734.60
A1910	567.82	B1912	734.60
A1911	734.60	B1913	774.30
A1912	734.60	B1914	853.72
A1913	774.30	B2001	853.72
A1914	853.72	B2002	547.97
A2001	853.72	B2003	547.97
A2002	547.97	B2004	472.52
A2003	547.97	B2005	472.52
A2004	472.52	B2006	547.97
A2005	472.52	B2007	547.97
A2006	547.97	B2008	853.72
A2007	547.97	B2009	1,064.17
A2008	853.72	B2010	567.82
A2009	1,064.17	B2011	734.60
A2010	567.82	B2012	734.60
A2011	734.60	B2013	774.30
A2012	734.60	B2014	853.72
A2013	774.30	B2101	853.72
A2014	853.72	B2102	547.97
A2101	853.72	B2103	547.97
A2102	547.97	B2104	472.52
A2103	547.97	B2105	472.52
A2104	472.52	B2106	547.97
A2105	472.52	B2107	547.97
A2106	547.97	B2108	853.72
A2107	547.97	B2109	1,064.17
A2108	853.72	B2110	567.82
A2109	1,064.17	B2111	734.60
A2110	567.82	B2112	734.60
A2111	734.60	B2113	774.30
A2112	734.60	B2114	853.72
A2113	774.30	B2201	853.72
A2114	853.72	B2202	547.97
APH 1	1,524.78	B2203	547.97
APH 2	1,786.86	B2204	472.52
APH 3	1,560.52	B2205	472.52
APH 4	1,786.86	B2206	547.97
APH 5	1,524.78	B2207	547.97
APH 6	1,528.76	B2208	853.72
APH 7	1,326.25	B2209	1,064.17
APH 8	1,278.60	B2210	567.82
APH 9	1,278.60	B2211	734.60
APH 10	1,326.25	B2212	734.60
APH 11	1,528.76	B2213	774.30
TH 1	702.83	B2214	853.72
TH 2	702.83	B2301	853.72

UNIT	\$/month	UNIT	\$/month
TH 3	702.83	B2302	547.97
TH 4	702.83	B2303	547.97
TH 5	702.83	B2304	472.52
TH 6	702.83	B2305	472.52
TH 7	702.83	B2306	547.97
TH 8	702.83	B2307	547.97
TH 9	702.83	B2308	853.72
TH 10	702.83	B2309	1,064.17
TH 11	702.83	B2310	567.82
TH 12	702.83	B2311	734.60
		B2312	734.60
		B2313	774.30
		B2314	853.72
		B2401	853.72
		B2402	547.97
		B2403	547.97
		B2404	472.52
		B2405	472.52
		B2406	547.97
		B2407	547.97

UNIT	\$/month	UNIT	\$/month
		B2408	853.72
		B2409	1,064.17
		B2410	567.82
		B2411	734.60
		B2412	734.60
		B2413	774.30
		B2414	853.72
		BPH 1	1,528.76
		BPH 2	1,786.86
		BPH 3	1,560.52
		BPH 4	1,786.86
		BPH 5	1,528.76
		BPH 6	1,528.76
		BPH 7	1,330.22
		BPH 8	1,278.60
		BPH 9	1,278.60
		BPH 10	1,330.22
		BPH 11	1,532.73



**stellar**  
Public Adjusting Services  
Professional Insurance Claim Representation

**RE-OPEN OLD & DENIED CLAIMS**

**FREE CLAIM INSPECTION**

IS YOUR ROOF LEAKING?

ARE YOU HAVING PLUMBING BACKUPS?

DO YOU HAVE WATER DAMAGE?

DOES YOUR DRAIN LINE NEED TO BE REPLACED?

**MIAMI-DADE (305) 396-9110**  
**BROWARD (954) 376-6991**  
**PALM BEACH (561) 404-3069**

**GOT PROPERTY DAMAGE? GET HELP NOW!**

**RESIDENTIAL • COMMERCIAL COMMUNITY ASSOCIATIONS**

  
Roof Leaks

  
Water Damage

  
Vandalism Damage

  
Loss of Income

  
Fire Damage

  
Flood Damage

  
Hurricane Damage

  
Mold Damage

**STELLARADJUSTING.COM**

This is solicitation for business. If you have had a claim for an insured property loss or damage and you are satisfied with the payment by your insurer, you may disregard this advertisement.

License #P175224

BLINDS & SHADES

FREE SHOP AT HOME SERVICE

WE BEAT ANY ESTIMATE  
**BLINDS, SHADES, SHUTTERS**

FREE MEASURING & INSTALLATION

FAST SERVICE, LOWEST PRICES GUARANTEED!

**20% OFF Motorized Shades**  
exp. 2/29/20 must present coupon

MOTORIZED SPECIALIST

VERTICALS REPAIRED & CLEANED  
SHADES REPAIRED & CLEANED

WE ALSO DO  
**REPAIRS**  
VERTICAL TRACKS REPAIRED



305-469-8162 WE SHOW UP! 25 Years in Biz



**Jorge Luis**  
BRICKELL SALON  
1925 Brickell Ave. D-302

Bring this ad when you visit for a  
**FREE AVENA HAIR TREATMENT**

Appointments: 305-858-7709

## 24-month Special Assessment per unit - Beginning January 1, 2020

unit	\$ per month	lump sum	unit	\$ per month	lump sum	unit	\$ per month	lump sum	unit	\$ per month	lump sum
A102	1.13	23.59	B101	1.13	23.59	A905	134.32	2,807.62	B907	155.76	3,255.90
A103	1.13	23.59	B102	1.13	23.59	A906	155.76	3,255.90	B908	242.68	5,072.60
A104	1.13	23.59	B103	1.13	23.59	A907	155.76	3,255.90	B909	302.50	6,323.05
A105	1.13	23.59	B104	1.13	23.59	A908	242.68	5,072.60	B910	161.41	3,373.87
A106	0.45	9.44	B105	1.13	23.59	A909	302.50	6,323.05	B911	208.82	4,364.79
A107	0.68	14.16	B106	1.13	23.59	A910	161.41	3,373.87	B912	208.82	4,364.79
A201	1.13	23.59	B107	1.13	23.59	A911	208.82	4,364.79	B913	220.10	4,600.73
A202	1.13	23.59	B108	1.13	23.59	A912	208.82	4,364.79	B914	242.68	5,072.60
A203	1.13	23.59	B109	1.13	23.59	A913	220.10	4,600.73	B1001	242.68	5,072.60
A204	1.13	23.59	B147	1.13	23.59	A914	242.68	5,072.60	B1002	155.76	3,255.90
A205	1.13	23.59	B201	30.48	637.02	A1001	242.68	5,072.60	B1003	155.76	3,255.90
A206	1.13	23.59	B202	296.86	6,205.08	A1002	155.76	3,255.90	B1004	134.32	2,807.62
A207	1.13	23.59	B203	30.48	637.02	A1003	155.76	3,255.90	B1005	134.32	2,807.62
A208	1.13	23.59	B204	40.63	849.36	A1004	134.32	2,807.62	B1006	155.76	3,255.90
A209	1.13	23.59	B401	242.68	5,072.60	A1005	134.32	2,807.62	B1007	155.76	3,255.90
A223	1.13	23.59	B402	155.76	3,255.90	A1006	155.76	3,255.90	B1008	242.68	5,072.60
A401	242.68	5,072.60	B403	155.76	3,255.90	A1007	155.76	3,255.90	B1009	302.50	6,323.05
A402	155.76	3,255.90	B404	134.32	2,807.62	A1008	242.68	5,072.60	B1010	161.41	3,373.87
A403	155.76	3,255.90	B405	134.32	2,807.62	A1009	302.50	6,323.05	B1011	208.82	4,364.79
A404	134.32	2,807.62	B406	155.76	3,255.90	A1010	161.41	3,373.87	B1012	208.82	4,364.79
A405	134.32	2,807.62	B407	155.76	3,255.90	A1011	208.82	4,364.79	B1013	220.10	4,600.73
A406	155.76	3,255.90	B408	242.68	5,072.60	A1012	208.82	4,364.79	B1014	242.68	5,072.60
A407	155.76	3,255.90	B409	302.50	6,323.05	A1013	220.10	4,600.73	B1101	242.68	5,072.60
A408	242.68	5,072.60	B410	161.41	3,373.87	A1014	242.68	5,072.60	B1102	155.76	3,255.90
A409	302.50	6,323.05	B411	208.82	4,364.79	A1101	242.68	5,072.60	B1103	155.76	3,255.90
A410	161.41	3,373.87	B412	208.82	4,364.79	A1102	155.76	3,255.90	B1104	134.32	2,807.62
A411	208.82	4,364.79	B413	220.10	4,600.73	A1103	155.76	3,255.90	B1105	134.32	2,807.62
A412	208.82	4,364.79	B414	242.68	5,072.60	A1104	134.32	2,807.62	B1106	155.76	3,255.90
A413	220.10	4,600.73	B501	242.68	5,072.60	A1105	134.32	2,807.62	B1107	155.76	3,255.90
A414	242.68	5,072.60	B502	155.76	3,255.90	A1106	155.76	3,255.90	B1108	242.68	5,072.60
A501	242.68	5,072.60	B503	155.76	3,255.90	A1107	155.76	3,255.90	B1109	302.50	6,323.05
A502	155.76	3,255.90	B504	134.32	2,807.62	A1108	242.68	5,072.60	B1110	161.41	3,373.87
A503	155.76	3,255.90	B505	134.32	2,807.62	A1109	302.50	6,323.05	B1111	208.82	4,364.79
A504	134.32	2,807.62	B506	155.76	3,255.90	A1110	161.41	3,373.87	B1112	208.82	4,364.79
A505	134.32	2,807.62	B507	155.76	3,255.90	A1111	208.82	4,364.79	B1113	220.10	4,600.73
A506	155.76	3,255.90	B508	242.68	5,072.60	A1112	208.82	4,364.79	B1114	242.68	5,072.60
A507	155.76	3,255.90	B509	302.50	6,323.05	A1113	220.10	4,600.73	B1201	242.68	5,072.60
A508	242.68	5,072.60	B510	161.41	3,373.87	A1114	242.68	5,072.60	B1202	155.76	3,255.90
A509	302.50	6,323.05	B511	208.82	4,364.79	A1201	242.68	5,072.60	B1203	155.76	3,255.90
A510	161.41	3,373.87	B512	208.82	4,364.79	A1202	155.76	3,255.90	B1204	134.32	2,807.62
A511	208.82	4,364.79	B513	220.10	4,600.73	A1203	155.76	3,255.90	B1205	134.32	2,807.62
A512	208.82	4,364.79	B514	242.68	5,072.60	A1204	134.32	2,807.62	B1206	155.76	3,255.90
A513	220.10	4,600.73	B601	242.68	5,072.60	A1205	134.32	2,807.62	B1207	155.76	3,255.90
A514	242.68	5,072.60	B602	155.76	3,255.90	A1206	155.76	3,255.90	B1208	242.68	5,072.60
A601	242.68	5,072.60	B603	155.76	3,255.90	A1207	155.76	3,255.90	B1209	302.50	6,323.05
A602	155.76	3,255.90	B604	134.32	2,807.62	A1208	242.68	5,072.60	B1210	161.41	3,373.87
A603	155.76	3,255.90	B605	134.32	2,807.62	A1209	302.50	6,323.05	B1211	208.82	4,364.79
A604	134.32	2,807.62	B606	155.76	3,255.90	A1210	161.41	3,373.87	B1212	208.82	4,364.79
A605	134.32	2,807.62	B607	155.76	3,255.90	A1211	208.82	4,364.79	B1213	220.10	4,600.73
A606	155.76	3,255.90	B608	242.68	5,072.60	A1212	208.82	4,364.79	B1214	242.68	5,072.60
A607	155.76	3,255.90	B609	302.50	6,323.05	A1213	220.10	4,600.73	B1401	242.68	5,072.60
A608	242.68	5,072.60	B610	161.41	3,373.87	A1214	242.68	5,072.60	B1402	155.76	3,255.90
A609	302.50	6,323.05	B611	208.82	4,364.79	A1401	242.68	5,072.60	B1403	155.76	3,255.90
A610	161.41	3,373.87	B612	208.82	4,364.79	A1402	155.76	3,255.90	B1404	134.32	2,807.62
A611	208.82	4,364.79	B613	220.10	4,600.73	A1403	155.76	3,255.90	B1405	134.32	2,807.62
A612	208.82	4,364.79	B614	242.68	5,072.60	A1404	134.32	2,807.62	B1406	155.76	3,255.90
A613	220.10	4,600.73	B701	242.68	5,072.60	A1405	134.32	2,807.62	B1407	155.76	3,255.90
A614	242.68	5,072.60	B702	155.76	3,255.90	A1406	155.76	3,255.90	B1408	242.68	5,072.60
A701	242.68	5,072.60	B703	155.76	3,255.90	A1407	155.76	3,255.90	B1409	302.50	6,323.05
A702	155.76	3,255.90	B704	134.32	2,807.62	A1408	242.68	5,072.60	B1410	161.41	3,373.87
A703	155.76	3,255.90	B705	134.32	2,807.62	A1409	302.50	6,323.05	B1411	208.82	4,364.79
A704	134.32	2,807.62	B706	155.76	3,255.90	A1410	161.41	3,373.87	B1412	208.82	4,364.79
A705	134.32	2,807.62	B707	155.76	3,255.90	A1411	208.82	4,364.79	B1413	220.10	4,600.73
A706	155.76	3,255.90	B708	242.68	5,072.60	A1412	208.82	4,364.79	B1414	242.68	5,072.60
A707	155.76	3,255.90	B709	302.50	6,323.05	A1413	220.10	4,600.73	B1501	242.68	5,072.60
A708	242.68	5,072.60	B710	161.41	3,373.87	A1414	242.68	5,072.60	B1502	155.76	3,255.90
A709	302.50	6,323.05	B711	208.82	4,364.79	A1501	242.68	5,072.60	B1503	155.76	3,255.90
A710	161.41	3,373.87	B712	208.82	4,364.79	A1502	155.76	3,255.90	B1504	134.32	2,807.62
A711	208.82	4,364.79	B713	220.10	4,600.73	A1503	155.76	3,255.90	B1505	134.32	2,807.62
A712	208.82	4,364.79	B714	242.68	5,072.60	A1504	134.32	2,807.62	B1506	155.76	3,255.90
A713	220.10	4,600.73	B801	242.68	5,072.60	A1505	134.32	2,807.62	B1507	155.76	3,255.90
A714	242.68	5,072.60	B802	155.76	3,255.90	A1506	155.76	3,255.90	B1508	242.68	5,072.60
A801	242.68	5,072.60	B803	155.76	3,255.90	A1507	155.76	3,255.90	B1509	302.50	6,323.05
A802	155.76	3,255.90	B804	134.32	2,807.62	A1508	242.68	5,072.60	B1510	161.41	3,373.87
A803	155.76	3,255.90	B805	134.32	2,807.62	A1509	302.50	6,323.05	B1511	208.82	4,364.79
A804	134.32	2,807.62	B806	155.76	3,255.90	A1510	161.41	3,373.87	B1512	208.82	4,364.79
A805	134.32	2,807.62	B807	155.76	3,255.90	A1511	208.82	4,364.79	B1513	220.10	4,600.73
A806	155.76	3,255.90	B808	242.68	5,072.60	A1512	208.82	4,364.79	B1514	242.68	5,072.60
A807	155.76	3,255.90	B809	302.50	6,323.05	A1513	220.10	4,600.73	B1601	242.68	5,072.60
A808	242.68	5,072.60	B810	161.41	3,373.87	A1514	242.68	5,072.60	B1602	155.76	3,255.90
A809	302.50	6,323.05	B811	208.82	4,364.79	A1601	242.68	5,072.60	B1603	155.76	3,255.90
A810	161.41	3,373.87	B812	208.82	4,364.79	A1602	155.76	3,255.90	B1604	134.32	2,807.62
A811	208.82	4,364.79	B813	220.10	4,600.73	A1603	155.76	3,255.90	B1605	134.32	2,807.62
A812	208.82	4,364.79	B814	242.68	5,072.60	A1604	134.32	2,807.62	B1606	155.76	3,255.90
A813	220.10	4,600.73	B901	242.68	5,072.60	A1605	134.32	2,807.62	B1607	155.76	3,255.90
A814	242.68	5,072.60	B902	155.76	3,255.90	A1606	155.76	3,255.90	B1608	242.68	5,072.60
A901	242.68	5,072.60	B903	155.76	3,255.90	A1607	155.76	3,255.90	B1609	302.50	6,323.05
A902	155.76	3,255.90	B904	134.32	2,807.62	A1608	242.68	5,072.60	B1610	161.41	3,373.87
A903	155.76	3,255.90	B905	134.32	2,807.62						
A904	134.32	2,807.62	B906	155.76	3,255.90						

Continued on page 5

**2020 Assessments (cont. from page 4)**

unit	\$ per month	lump sum	unit	\$ per month	lump sum
A1609	302.50	6,323.05	B1611	208.82	4,364.79
A1610	161.41	3,373.87	B1612	208.82	4,364.79
A1611	208.82	4,364.79	B1613	220.10	4,600.73
A1612	208.82	4,364.79	B1614	242.68	5,072.60
A1613	220.10	4,600.73	B1701	242.68	5,072.60
A1614	242.68	5,072.60	B1702	155.76	3,255.90
A1701	242.68	5,072.60	B1703	155.76	3,255.90
A1702	155.76	3,255.90	B1704	134.32	2,807.62
A1703	155.76	3,255.90	B1705	134.32	2,807.62
A1704	134.32	2,807.62	B1706	155.76	3,255.90
A1705	134.32	2,807.62	B1707	155.76	3,255.90
A1706	155.76	3,255.90	B1708	242.68	5,072.60
A1707	155.76	3,255.90	B1709	302.50	6,323.05
A1708	242.68	5,072.60	B1710	161.41	3,373.87
A1709	302.50	6,323.05	B1711	208.82	4,364.79
A1710	161.41	3,373.87	B1712	208.82	4,364.79
A1711	208.82	4,364.79	B1713	220.10	4,600.73
A1712	208.82	4,364.79	B1714	242.68	5,072.60
A1713	220.10	4,600.73	B1801	242.68	5,072.60
A1714	242.68	5,072.60	B1802	155.76	3,255.90
A1801	242.68	5,072.60	B1803	155.76	3,255.90
A1802	155.76	3,255.90	B1804	134.32	2,807.62
A1803	155.76	3,255.90	B1805	134.32	2,807.62
A1804	134.32	2,807.62	B1806	155.76	3,255.90
A1805	134.32	2,807.62	B1807	155.76	3,255.90
A1806	155.76	3,255.90	B1808	242.68	5,072.60
A1807	155.76	3,255.90	B1809	302.50	6,323.05
A1808	242.68	5,072.60	B1810	161.41	3,373.87
A1809	302.50	6,323.05	B1811	208.82	4,364.79
A1810	161.41	3,373.87	B1812	208.82	4,364.79
A1811	208.82	4,364.79	B1813	220.10	4,600.73
A1812	208.82	4,364.79	B1814	242.68	5,072.60
A1813	220.10	4,600.73	B1901	242.68	5,072.60
A1814	242.68	5,072.60	B1902	155.76	3,255.90
A1901	242.68	5,072.60	B1903	155.76	3,255.90
A1902	155.76	3,255.90	B1904	134.32	2,807.62
A1903	155.76	3,255.90	B1905	134.32	2,807.62
A1904	134.32	2,807.62	B1906	155.76	3,255.90
A1905	134.32	2,807.62	B1907	155.76	3,255.90
A1906	155.76	3,255.90	B1908	242.68	5,072.60
A1907	155.76	3,255.90	B1909	302.50	6,323.05
A1908	242.68	5,072.60	B1910	161.41	3,373.87
A1909	302.50	6,323.05	B1911	208.82	4,364.79
A1910	161.41	3,373.87	B1912	208.82	4,364.79
A1911	208.82	4,364.79	B1913	220.10	4,600.73
A1912	208.82	4,364.79	B1914	242.68	5,072.60
A1913	220.10	4,600.73	B2001	242.68	5,072.60
A1914	242.68	5,072.60	B2002	155.76	3,255.90
A2001	242.68	5,072.60	B2003	155.76	3,255.90
A2002	155.76	3,255.90	B2004	134.32	2,807.62
A2003	155.76	3,255.90	B2005	134.32	2,807.62
A2004	134.32	2,807.62	B2006	155.76	3,255.90
A2005	134.32	2,807.62	B2007	155.76	3,255.90
A2006	155.76	3,255.90	B2008	242.68	5,072.60
A2007	155.76	3,255.90	B2009	302.50	6,323.05
A2008	242.68	5,072.60	B2010	161.41	3,373.87
A2009	302.50	6,323.05	B2011	208.82	4,364.79
A2010	161.41	3,373.87	B2012	208.82	4,364.79
A2011	208.82	4,364.79	B2013	220.10	4,600.73
A2012	208.82	4,364.79	B2014	242.68	5,072.60
A2013	220.10	4,600.73	B2101	242.68	5,072.60
A2014	242.68	5,072.60	B2102	155.76	3,255.90
A2101	242.68	5,072.60	B2103	155.76	3,255.90
A2102	155.76	3,255.90	B2104	134.32	2,807.62
A2103	155.76	3,255.90	B2105	134.32	2,807.62
A2104	134.32	2,807.62	B2106	155.76	3,255.90
A2105	134.32	2,807.62	B2107	155.76	3,255.90
A2106	155.76	3,255.90	B2108	242.68	5,072.60
A2107	155.76	3,255.90	B2109	302.50	6,323.05
A2108	242.68	5,072.60	B2110	161.41	3,373.87
A2109	302.50	6,323.05	B2111	208.82	4,364.79
A2110	161.41	3,373.87	B2112	208.82	4,364.79
A2111	208.82	4,364.79	B2113	220.10	4,600.73
A2112	208.82	4,364.79	B2114	242.68	5,072.60
A2113	220.10	4,600.73	B2201	242.68	5,072.60
A2114	242.68	5,072.60	B2202	155.76	3,255.90
APH 1	433.43	9,059.89	B2203	155.76	3,255.90
APH 2	507.93	10,617.06	B2204	134.32	2,807.62
APH 3	443.59	9,272.23	B2205	134.32	2,807.62
APH 4	507.93	10,617.06	B2206	155.76	3,255.90
APH 5	433.43	9,059.89	B2207	155.76	3,255.90
APH 6	434.56	9,083.48	B2208	242.68	5,072.60
APH 7	377.00	7,880.22	B2209	302.50	6,323.05
APH 8	363.45	7,597.10	B2210	161.41	3,373.87
APH 9	363.45	7,597.10	B2211	208.82	4,364.79
APH 10	377.00	7,880.22	B2212	208.82	4,364.79
APH 11	434.56	9,083.48	B2213	220.10	4,600.73
			B2214	242.68	5,072.60
			B2301	242.68	5,072.60
TH 1	199.79	4,176.04	B2302	155.76	3,255.90

unit	\$ per month	lump sum	unit	\$ per month	lump sum
TH 2	199.79	4,176.04	B2303	155.76	3,255.90
TH 3	199.79	4,176.04	B2304	134.32	2,807.62
TH 4	199.79	4,176.04	B2305	134.32	2,807.62
TH 5	199.79	4,176.04	B2306	155.76	3,255.90
TH 6	199.79	4,176.04	B2307	155.76	3,255.90
TH 7	199.79	4,176.04	B2308	242.68	5,072.60
TH 8	199.79	4,176.04	B2309	302.50	6,323.05
TH 9	199.79	4,176.04	B2310	161.41	3,373.87
TH 10	199.79	4,176.04	B2311	208.82	4,364.79
TH 11	199.79	4,176.04	B2312	208.82	4,364.79
TH 12	199.79	4,176.04	B2313	220.10	4,600.73
			B2314	242.68	5,072.60
			B2401	242.68	5,072.60
			B2402	155.76	3,255.90
			B2403	155.76	3,255.90
			B2404	134.32	2,807.62
			B2405	134.32	2,807.62
			B2406	155.76	3,255.90
			B2407	155.76	3,255.90
			B2408	242.68	5,072.60
			B2409	302.50	6,323.05
			B2410	161.41	3,373.87
			B2411	208.82	4,364.79
			B2412	208.82	4,364.79
			B2413	220.10	4,600.73
			B2414	242.68	5,072.60
			BPH 1	434.56	9,083.48
			BPH 2	507.93	10,617.06
			BPH 3	443.59	9,272.23
			BPH 4	507.93	10,617.06
			BPH 5	434.56	9,083.48
			BPH 6	434.56	9,083.48
			BPH 7	378.12	7,903.81
			BPH 8	363.45	7,597.10
			BPH 9	363.45	7,597.10
			BPH 10	378.12	7,903.81
			BPH 11	435.69	9,107.08

**BRICKELL PLACE CONDO**  
Sold within past 4 Months

Apt #	Bed	Bath	Sq Ft	Sold Price
A-1865	1	1.5	868	\$225,000.00
B-1803	1	1.5	1,064	\$250,000.00
B-2101	2	2	1,661	\$500,000.00
B-1514	2	2	1,723	\$523,000.00
D-802	1	1.5	1,007	\$300,000.00
214	1	1.5	640	\$166,000.00



**ALYESKA SEMSCH**  
RE Broker

**786-326-7655**

Alyeska@semschrealty.com



200 Crandon Blvd Suite 360, Key Biscayne, FL 33149

**MLS SEARCH: [www.SemschRealty.com](http://www.SemschRealty.com)**

Brickell / Downtown / Key Biscayne  
Coconut Grove / Coral Gables / Sunny Isles

Information is believed accurate, but not guaranteed. Information obtained from Miami-Dade public records.

# Brickell Place Projects in Progress December 2019

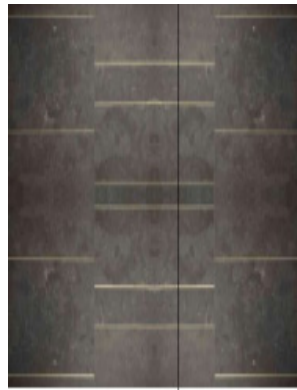
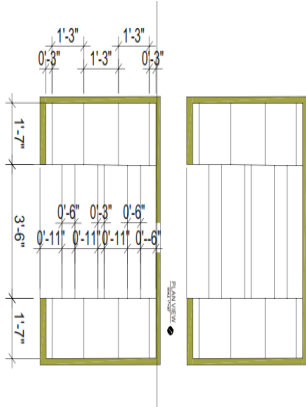
## MERRY CHRISTMAS



## PLACEMENT OF NEW PERIMETER MESH



## ELEVATOR DESIGN PROPOSAL



## RECYCLE THE RIGHT WAY

MIXED RECYCLING	PAPER RECYCLING	LANDFILL/BASURERO
<p>SPRINK CANES MUST BE EMPTY. LATAS DE SPRAY DEBEN ESTAR VACIAS.</p> <p>SEPARATE THE LID FROM THE GLASS. SEPARA LA TAPA DEL FRASCO.</p> <p>METAL GLASS BOTTLES YOGURT CUPS PLASTIC #1-6 TIN FOIL</p> <p>METAL BOTELLAS DE VIDRIO POTES DE YOGURT PLASTICOS #1-6 HOJALATA</p> <p>RINSE FOOD LEFTOVERS FROM CONTAINERS ENJUAGUE LOS RESIDUOS DE COMIDA DE LAS LATAS</p> <p>BCPA PLEASE RECYCLE</p>	<p>NEWSPAPER MAGAZINES CARDBOARD BOXES MILK JUGS CEREAL BOXES</p> <p>PERIODICOS REVISTAS CAJAS DE CARTON CARTONES DE LECHE CAJAS DE CEREAL</p> <p>REMEMBER TO FLATEN CARDBOARD BOXES RECUERDE DESARMAR LAS CAJAS DE CARTON</p> <p>BCPA PLEASE RECYCLE</p>	<p>FOOD LEFTOVERS PLASTIC BAGS STYROFOAM WRAPPERS USED PAPER CUPS</p> <p>RESTOS DE COMIDA BOLSAS PLASTICAS ANIME ENVOLTORIOS VASOS DE CARTON</p> <p>DON'T THROW PAINT, BATTERIES OR ELECTRONICS IN THE GARBAGE NO BOTE PILAS, APARATOS ELECTRONICOS NI LATAS DE PINTURA EN LA BASURA.</p>

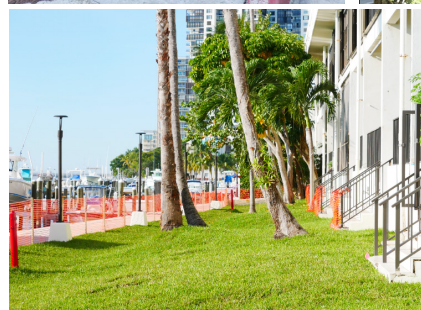
## ELEVATOR FLOORING INSTALLATION



## LANDSCAPING



## TENNIS COURTS HYDRO-JET CLEANING



# One Day After Christmas

It's one day after Christmas  
I'm crabby and I'm broke.  
I'm so full of ham and fruitcake  
I think I'm gonna croak.

It's nice to see the relatives  
I wonder when they'll leave.  
They've been camping in my  
bathroom  
since early Christmas Eve.

They're eating everything in sight  
and sleeping in my bed.  
I been sacked out in the basement  
with my beagle, Fred.

The relatives have all gone out  
and left their screaming brats.  
The toilet bowl is all plugged up  
and I can't find the cat.

It's Christmastime at my house,  
the relatives are here.  
They eat me out of house and home.  
and drink up all my beer.

I love the decorations,  
and the sleigh bells in the snow  
But I wish those pesky relatives  
would take their kids and go.

Those cookie crunchers fed the dog  
a twenty pound rib roast.  
His feet are sticking in the air  
like skinny old fence posts.

Now they're in a free-for-all,  
the girls against the boys.  
They're fighting over boxes  
'cause they're bored with all their toys

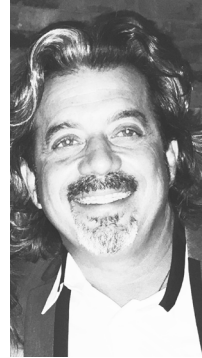
My mother-in-law is snoring  
in my favorite TV chair.  
Those kids are stringing lights on her  
and tinseling her hair

I oughta wake her up  
before the fireworks begin.  
But I wanna see those blue sparks fly  
when they plug her in.

Author Unknown

## One Dollar Emergency Dental Visit Including Necessary X-Rays

NEW PATIENTS ONLY.



Meet Your  
Neighborhood Dentist  
**Dr. Edy A. Guerra**

Over 20 years in Surfside / Bay Harbour / Bal Harbour

### Two Locations to Better Serve You

9456 Harding Ave.      4011 W. Flagler St.  
Surfside, FL 33154      Coral Gables, FL 33134

**(305) 866-2626**

<http://www.dentistsurfside.com/>



Retired nurse looking for part time work caring for elderly patients. Has own car for help with transportation to and from doctor's appointments, shopping and errands.

**786-486-9022**

Excellent References  
Resume Available on Request

**LIFESTYLE**  
INTERNATIONAL REALTY

**Fernando A. Rizzo, MBA**  
REALTOR®

📞 (352) 256-2203  
✉ [Fernando@RizzoTheRealtor.com](mailto:Fernando@RizzoTheRealtor.com)

"Work with a Professional"



Yes, eeverything!

**INDIVIDUAL HEALTH INSURANCE**

SHOP, QUOTE & ENROLL TODAY!  
GET COVERED TOMORROW!

**How do these plans help ME?**

- \$50 office visits: no referrals needed!
- \$25 Rx copays!
- \$75 Urgent Care visits!
- 3 year Guarantee with Pre-Ex!
- \$2,500 Deductibles!

**SUBSIDIES TO REDUCE YOUR COST**

**NO PRE-EXISTING  
PLANS FOR YOU, YOUR FAMILY  
OR YOUR EMPLOYEES**

**WE ALSO INSURE:**

- Homeowners • Auto
- General Liability • Life Insurance

**305-357-5605**

**www.WeInsureEverything.com**

Explore  
Brickell Place  
Sales and Availability.

SIMPLY VISIT:

**BrickellPlaceRealtor.com**

Information at your fingertips



Local specialist and 30-year  
Brickell Place resident.

**Jose Luis Pere**

Real Estate Advisor  
JoseLuis@JLPere.com  
305.588.6498

COMPASS

Not intended to solicit currently listed property. © Compass Florida, LLC. Equal Housing Opportunity. All information furnished regarding property for sale or rent or regarding financing is from sources deemed reliable, but Compass makes no warranty or representation as to the accuracy thereof. All property information is presented



**BERKSHIRE  
HATHAWAY**  
HomeServices  
EWM Realty



**Raquel Echevarria**  
305 300-2622  
echevarria.r@ewm.com

**Lilia V Naar PA**  
305 582-3017  
lilnaar@gmail.com  
www.lilia.naar.ewm.com

**PHASE I**

TOTAL UNITS (A & B)	557
UNITS FOR SALE	13
UNITS SOLD (6 months)	8
AVERAGE DAYS ON MKT	77 DAYS
AVERAGE SOLD \$/SQFT	<b>\$280/SQFT</b>

**PHASE II**

TOTAL UNITS (C & D)	379
UNITS FOR SALE	12
UNITS SOLD (6 months)	1
AVERAGE DAYS ON MKT	95
AVERAGE SOLD \$/SQFT	<b>\$298/SQFT</b>



WISHING YOU HAPPY HOLIDAYS FILLED WITH JOY, ABUNDANCE  
AND HAPPINESS FOR THE NEW YEAR